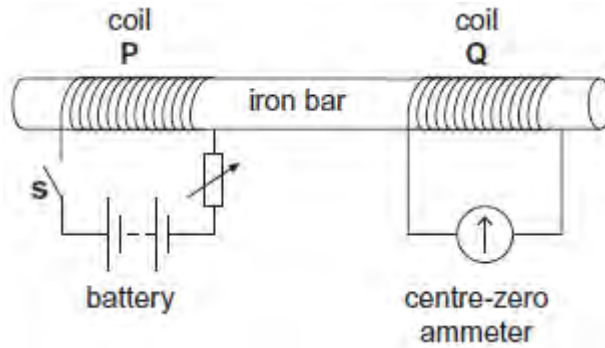


Q1.(a) **Figure 1** shows two coils, **P** and **Q**, linked by an iron bar. Coil **P** is connected to a battery through a variable resistor and a switch **S**. Coil **Q** is connected to a centre-zero ammeter.

Figure 1



(i) Initially the variable resistor is set to its minimum resistance and **S** is open. Describe and explain what is observed on the ammeter when **S** is closed.

.....

.....

.....

.....

.....

.....

(3)

(ii) With **S** still closed, the resistance of the variable resistor is suddenly increased. Compare what is now observed on the ammeter with what was observed in part (i). Explain why this differs from what was observed in part (i).

.....

.....

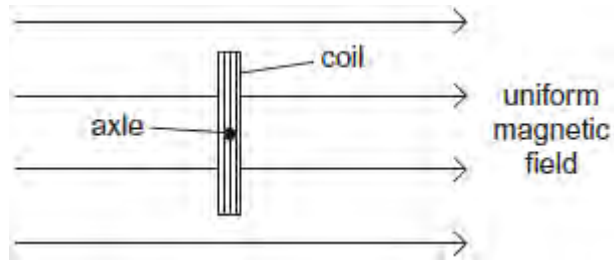
.....

.....

(2)

- (b) **Figure 2** shows a 40-turn coil of cross-sectional area $3.6 \times 10^{-3} \text{ m}^2$ with its plane set at right angles to a uniform magnetic field of flux density 0.42 T.

Figure 2



- (i) Calculate the magnitude of the magnetic flux linkage for the coil. State an appropriate unit for your answer.

flux linkage unit

(2)

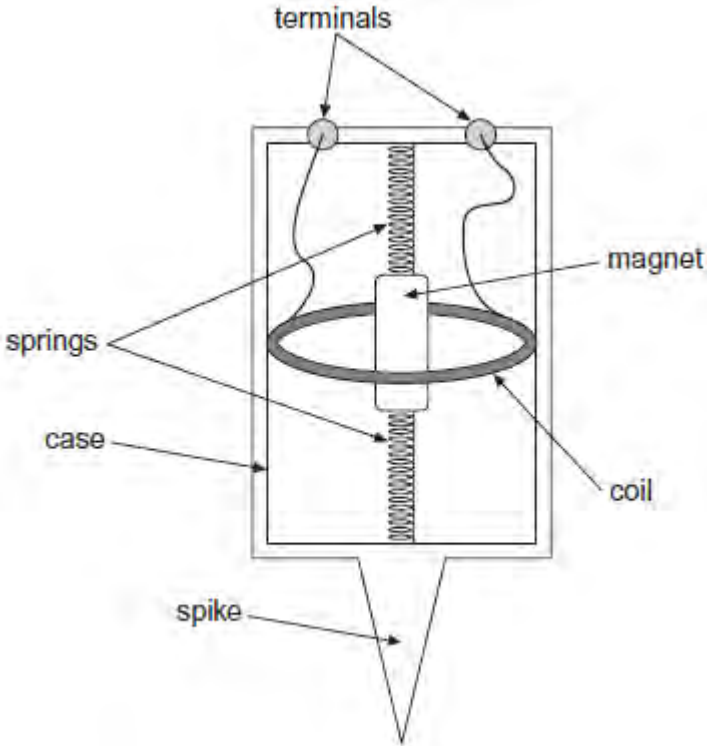
- (ii) The coil is rotated through 90° in a time of 0.50 s. Determine the mean emf in the coil.

mean emf V

(2)

(Total 9 marks)

Q2.The diagram below shows the main parts of a geophone.



The spike attaches the geophone firmly to the ground. At the instant an earthquake occurs, the case and coil move upwards due to the Earth’s movement. The magnet remains stationary due to its inertia. In 3.5 ms, the coil moves from a position where the flux density is 9.0 mT to a position where the flux density is 23.0 mT.

- (a) The geophone coil has 250 turns and an area of 12 cm².

Calculate the average emf induced in the coil during the first 3.5 ms after the start of the earthquake.

emf V

(3)

- (b) Explain how the initial emf induced in the coil of the geophone would be affected:
if the stiffness of the springs were to be increased

.....
.....

if the number of turns on the coil were to be increased.

.....
.....

(2)

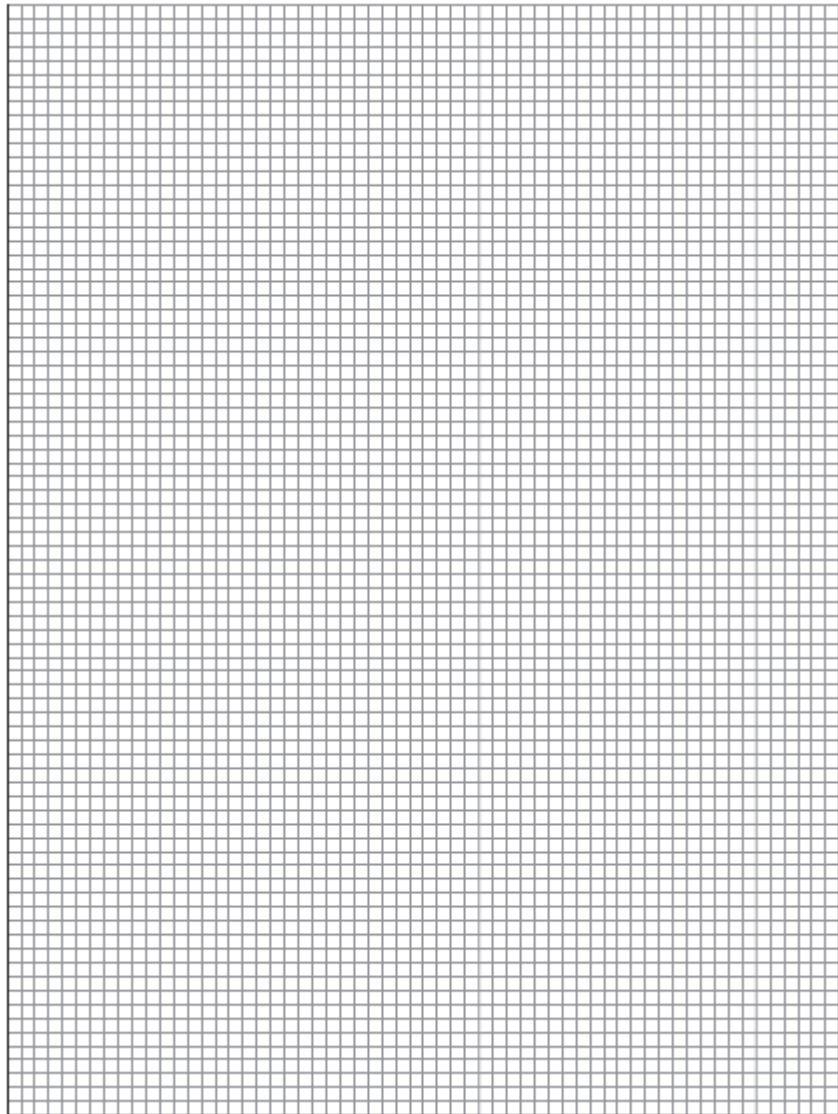
- (c) (i) The geophone's magnet has a mass of 8.0×10^{-3} kg and the spring stiffness of the system is 2.6 N m^{-1} .

Show that the natural period of oscillation of the mass-spring system is approximately 0.35 s.

(2)

- (ii) At the instant that the Earth stops moving after one earthquake, the emf in the coil is at its maximum value of +8 V. The magnet continues to oscillate.

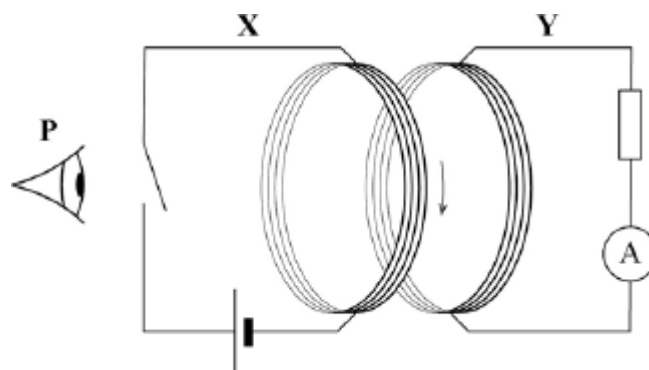
On the grid below, sketch a graph showing the variation of emf with time as the magnet's oscillation decays.
Show at least **three** oscillations.



(3)
(Total 10 marks)

Q3.Figure 1 shows an arrangement for investigating electromagnetic induction.

Figure 1



When the switch is closed there is a current in the coil in circuit **X**. The current is in a clockwise direction as viewed from position **P**.

Circuit **Y** is viewed from position **P**.

- (a) Explain how Lenz's law predicts the direction of the induced current when the switch is opened and again when it is closed.

.....

.....

.....

.....

.....

.....

.....

.....

.....

.....

.....

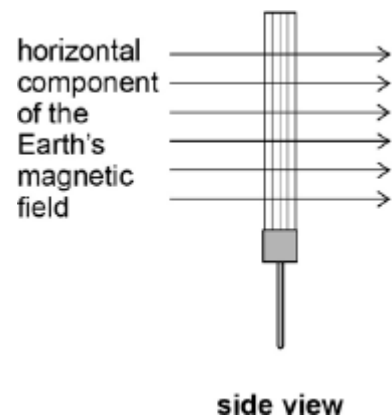
.....

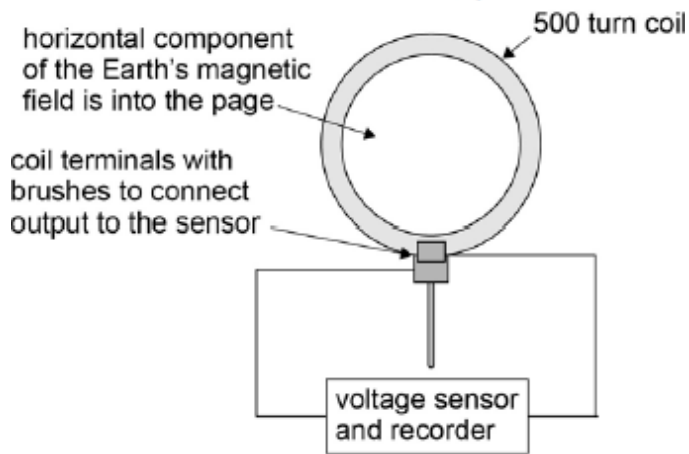
(4)

An 'Earth inductor' consists of a 500 turn coil. **Figure 2** and **Figure 3** shows it set up to measure the horizontal component of the Earth's magnetic field. When the coil is rotated an induced emf is produced.

Figure 2

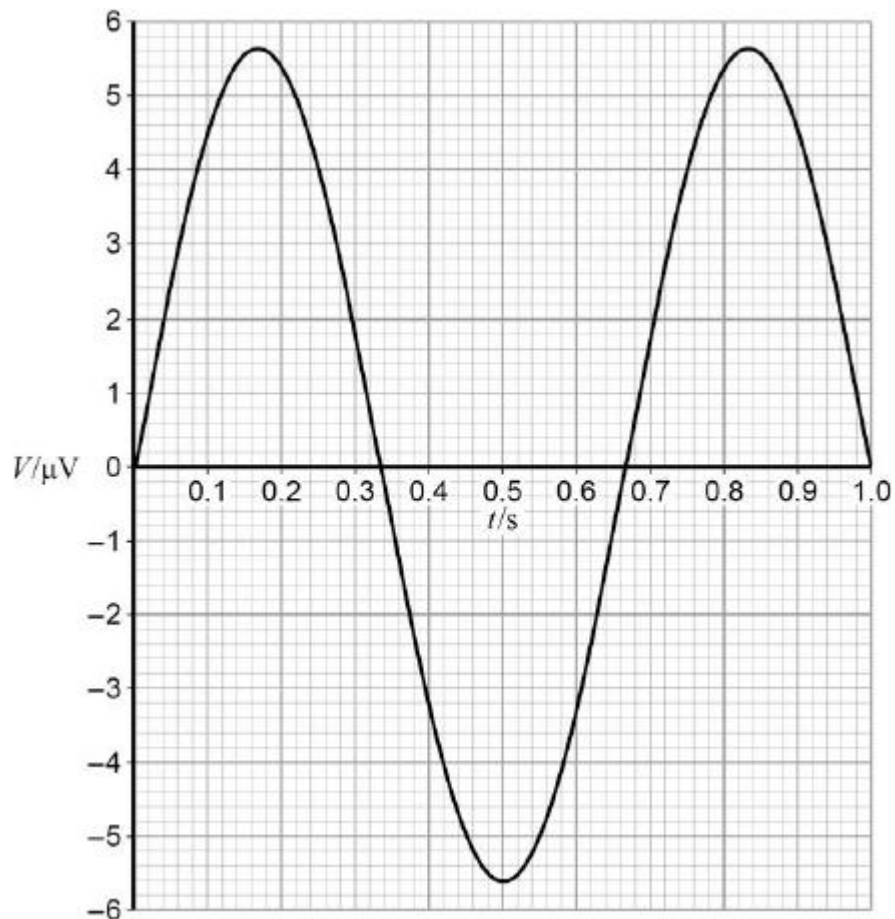
Figure 3





The mean diameter of the turns on the coil is 35 cm. **Figure 4** shows the output recorded for the variation of potential difference V with time t when the coil is rotated at 1.5 revolutions per second.

Figure 4

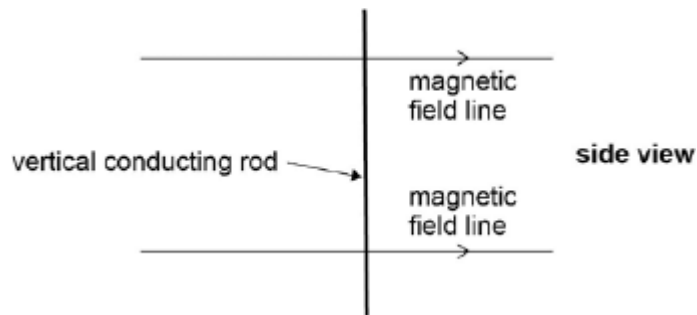


- (b) Determine the flux density, B_H , of the horizontal component of the Earth's magnetic field.

horizontal component of flux density = _____ T

(3)
(Total 7 marks)

Q4. A vertical conducting rod of length l is moved at a constant velocity v through a uniform horizontal magnetic field of flux density B .



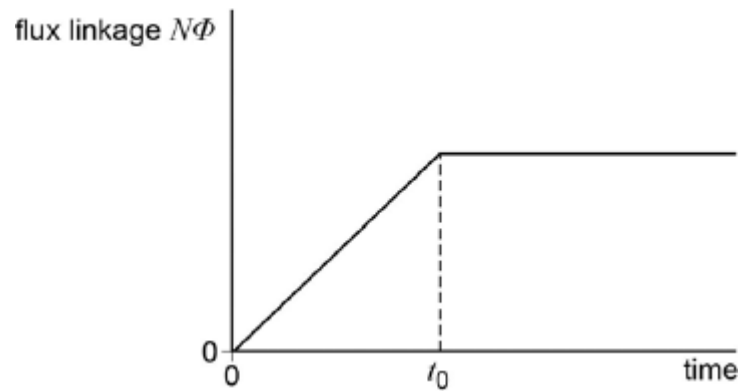
Which of the rows gives a correct expression for the induced emf between the ends of the rod for the stated direction of the motion of the rod?

	Direction of motion	Induced emf	
A	Vertical	$\frac{B}{lv}$	<input type="checkbox"/>
B	Horizontal at right angles to the field	Blv	<input type="checkbox"/>
C	Vertical	Blv	<input type="checkbox"/>
D	Horizontal at right angles to the field	$\frac{B}{lv}$	<input type="checkbox"/>

(Total 1 mark)

Q5. The graph shows how the flux linkage, $N\Phi$, through a coil changes when the coil is moved

into a magnetic field.



The emf induced in the coil

A decreases then becomes zero after time t_0 .

B increases then becomes constant after time t_0 .

C is constant then becomes zero after time t_0 .

D is zero then increases after time t_0 .

(Total 1 mark)

Q6. In which one of the following applications does electromagnetic induction **not** take place?

A the generators at a nuclear power station

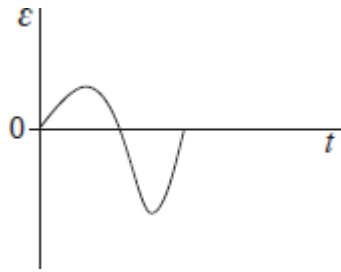
B the ac power adapter for a laptop computer

C the wings of an aircraft cutting through the Earth's magnetic field

D the back up capacitor of an electric timer

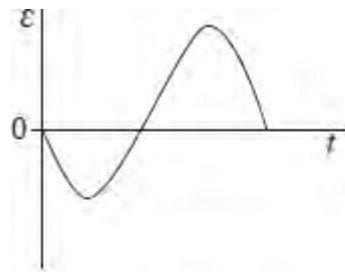
(Total 1 mark)

Q7. When a magnet is dropped through an aluminium ring an emf is induced. A data logger connected to the ring records the variation of the induced emf ε with time t as shown below.

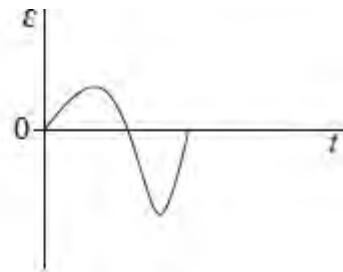


In a second experiment, the magnet is dropped from a greater height.

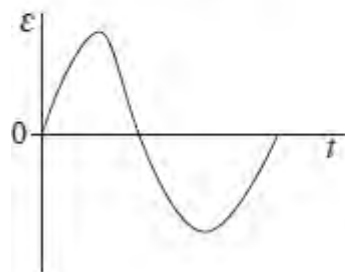
Which one of the following graphs best represents the induced emf in the second experiment?



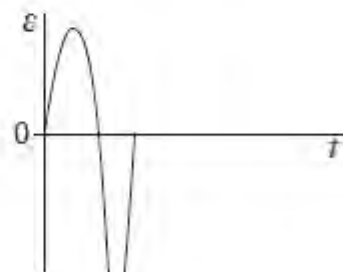
A



B



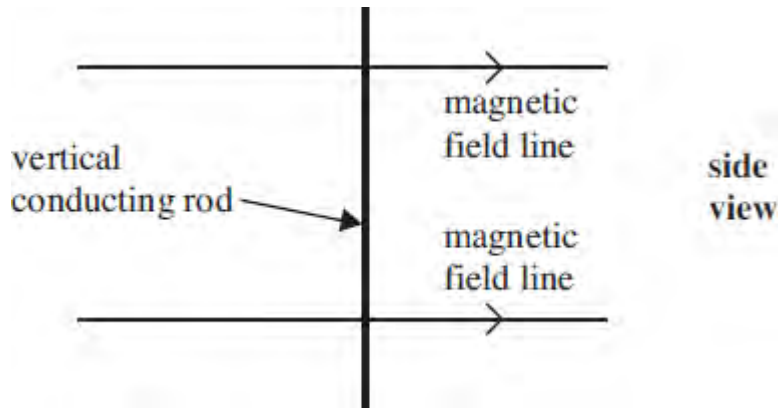
C



D

(Total 1 mark)

Q8. A vertical conducting rod of length l is moved at a constant velocity v through a uniform horizontal magnetic field of flux density B .



Which line, **A** to **D**, in the table gives a correct expression for the induced emf for the stated direction of the motion of the rod?

	direction of motion	induced emf
A	vertical	$\frac{B}{lv}$
B	horizontal at right angles to the field	Blv
C	vertical	Blv
D	horizontal at right angles to the field	$\frac{B}{lv}$

(Total 1 mark)

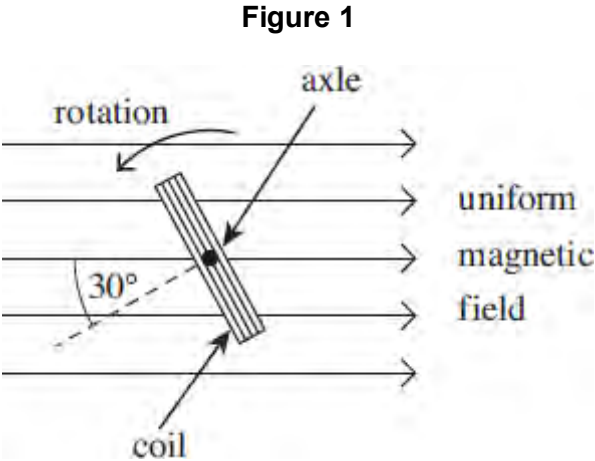
Q9.A transformer, which is not perfectly efficient, is connected to a 230 V rms mains supply and is used to operate a 12 V rms, 60 W lamp at normal brightness. The secondary coil of the transformer has 24 turns.

Which line, **A** to **D**, in the table is correct?

	number of turns on primary coil	rms current in primary coil
A	92	less than 0.26 A
B	92	more than 0.26 A
C	460	less than 0.26 A
D	460	more than 0.26 A

(Total 1 mark)

Q10. A rectangular coil is rotating anticlockwise at constant angular speed with its axle at right angles to a uniform magnetic field. **Figure 1** shows an end-on view of the coil at a particular instant.



(a) At the instant shown in **Figure 1**, the angle between the normal to the plane of the coil and the direction of the magnetic field is 30° .

(i) State the minimum angle, in degrees, through which the coil must rotate from its position in **Figure 1** for the emf to reach its maximum value.

angle degrees (1)

(ii) Calculate the minimum angle, in radians, through which the coil must rotate from its position in **Figure 1** for the flux linkage to reach its maximum value.

angle radians (2)

(b) **Figure 2** shows how, starting in a different position, the flux linkage through the coil varies with time.

(i) What physical quantity is represented by the gradient of the graph shown in **Figure 2**?

..... (1)

(ii) Calculate the number of revolutions per minute made by the coil.

revolutions per minute

(2)

Figure 2

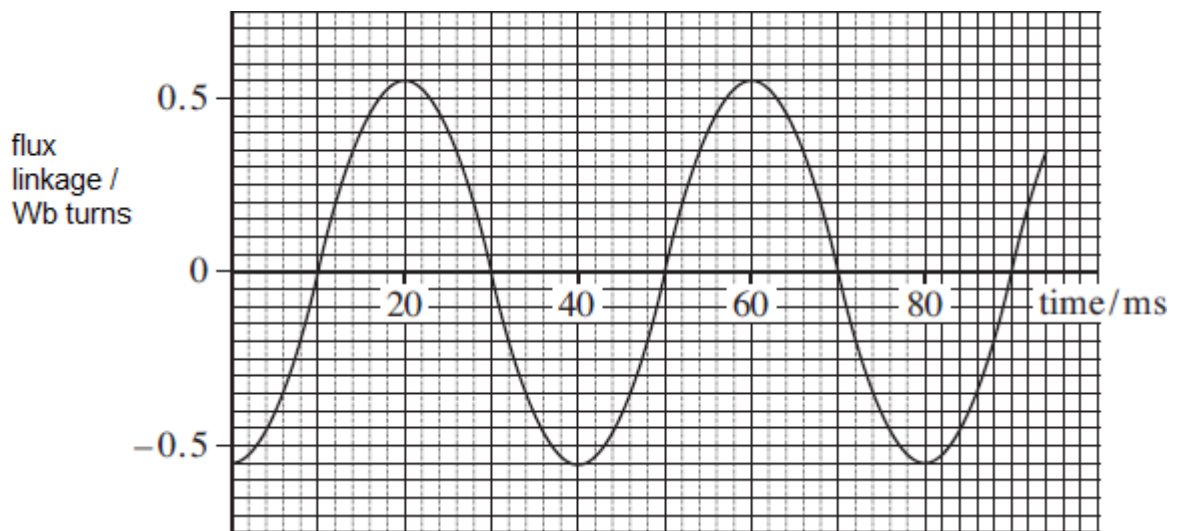
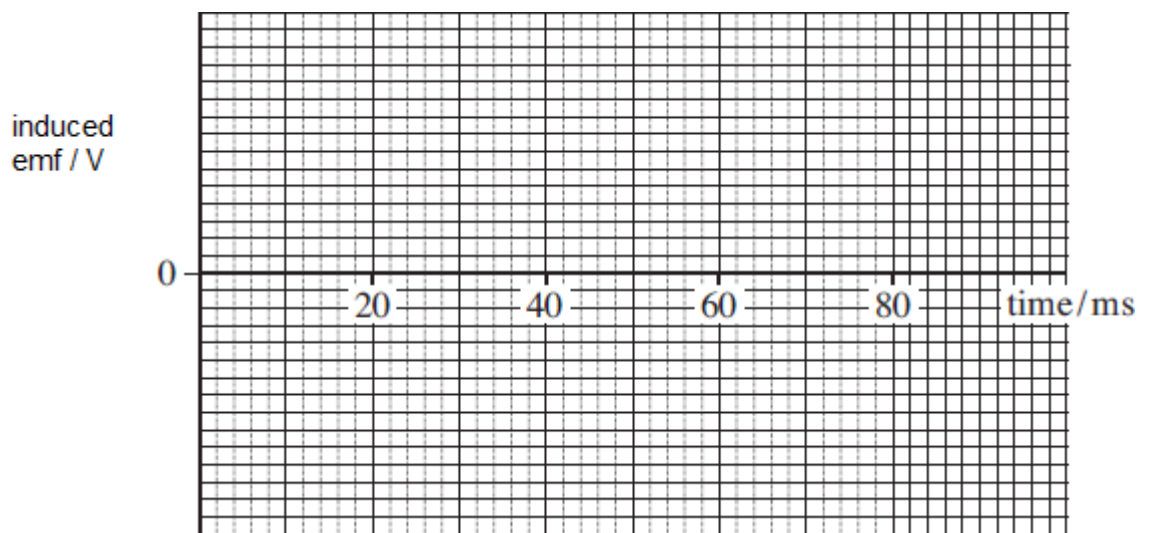


Figure 3



(iii) Calculate the peak value of the emf generated.