



GCSE Biology

Principles of Organisation

Mark Scheme

Time available: 25 minutes

Marks available: 21 marks

www.accesstuition.com

Mark schemes

1.

(a) (A) bronchus

allow bronchi
allow bronchiole

1

(B) trachea

allow windpipe

1

(C) alveolus

allow alveoli
ignore air sac

1

(b) circulatory system

1

(c) Q

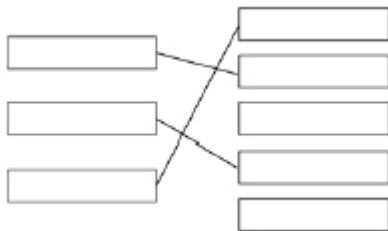
1

(d) guard cell

1

(e) a group of cells with a similar structure / function

1



(f)

1 mark for each correct line
extra line from a tissue negates the mark for that tissue

3

[10]

2.

(a) (i) A = (cell) membrane

1

B = cytoplasm

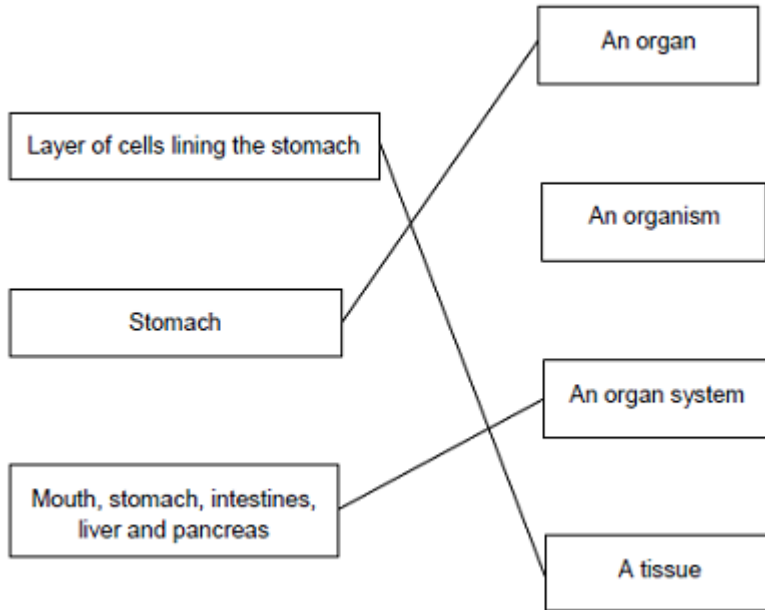
do not accept cytoplasm

1

(ii) To control the activities of the cell

1

(b)



extra lines cancel

3

[6]

3.

(a)

Structure	Organ	Organ system	Tissue
Stomach	✓		
Cells lining the stomach			✓
Mouth, oesophagus, stomach, liver, pancreas, small and large intestine		✓	

all 3 correct = 2 marks
2 correct = 1 mark
1 or 0 correct = 0 marks

2

(b) (i) diffusion

allow phonetic spelling

1

(ii) glucose

1

(iii) mitochondria

1

[5]