



Please write clearly in block capitals.

Centre number

| | | | | | |
|--|--|--|--|--|--|
| | | | | | |
|--|--|--|--|--|--|

Candidate number

| | | | | | |
|--|--|--|--|--|--|
| | | | | | |
|--|--|--|--|--|--|

Surname

Forename(s)

Candidate signature

I declare this is my own work.

GCSE COMBINED SCIENCE: TRILOGY

H

Higher Tier
Physics Paper 2H

Time allowed: 1 hour 15 minutes

Materials

For this paper you must have:

- a protractor
- a ruler
- a scientific calculator
- the Physics Equations Sheet (enclosed).

Instructions

- Use black ink or black ball-point pen.
- Pencil should only be used for drawing.
- Fill in the boxes at the top of this page.
- Answer **all** questions in the spaces provided.
- If you need extra space for your answer(s), use the lined pages at the end of this book. Write the question number against your answer(s).
- Do all rough work in this book. Cross through any work you do not want to be marked.
- In all calculations, show clearly how you work out your answer.

Information

- The maximum mark for this paper is 70.
- The marks for questions are shown in brackets.
- You are expected to use a calculator where appropriate.
- You are reminded of the need for good English and clear presentation in your answers.

| For Examiner's Use | |
|--------------------|------|
| Question | Mark |
| 1 | |
| 2 | |
| 3 | |
| 4 | |
| 5 | |
| 6 | |
| TOTAL | |



J U N 2 1 8 4 6 4 P 2 H 0 1

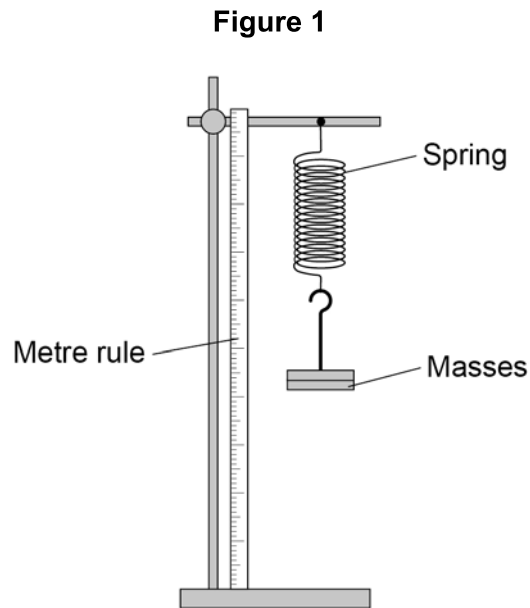
IB/M/Jun21/E10

8464/P/2H

0 1

Figure 1 shows a stretched spring.

The spring is elastically deformed.



0 1 1

What is meant by 'elastically deformed'?

[1 mark]

Tick (✓) **one** box.

As the force on the spring increases the length of the spring increases.

Only a very small force is needed to stretch the spring.

The force on the spring causes it to change shape.

The spring will return to its original length when the force is removed.



0 1 . 2

Describe a method to determine the extension of the spring.

[2 marks]

0 1 . 3

The extension of the spring is 80 mm.

spring constant = 40 N/m

Calculate the elastic potential energy of the spring.

Use the Physics Equations Sheet.

[3 marks]

Elastic potential energy = _____ J

Question 1 continues on the next page**Turn over ►**

0 1 . 4

Write down the equation which links extension (e), force (F) and spring constant (k).**[1 mark]**

0 1 . 5

A force of 300 N acts on a different spring.

The force causes the spring to extend by 0.40 m.

Calculate the spring constant of the spring.

[3 marks]

Spring constant = _____ N/m

10

Turn over for the next question

*Do not write
outside the
box*

**DO NOT WRITE ON THIS PAGE
ANSWER IN THE SPACES PROVIDED**

Turn over ►



0 2

Professional rugby players wear a tracking device that measures their velocity and acceleration.

Figure 2 shows a player wearing a tracking device.

The player is tackling another player who is running with the ball.

Figure 2

Tracking
device



0 2 . 1

Velocity and acceleration are both vector quantities.

What is a vector quantity?

[1 mark]

Tick (✓) **one** box.

A quantity with both magnitude and direction

A quantity with direction only

A quantity with magnitude only



0 2 . 2 Which of the following is a vector quantity?

[1 mark]

Tick (✓) **one** box.

Displacement

Distance

Time

Work done

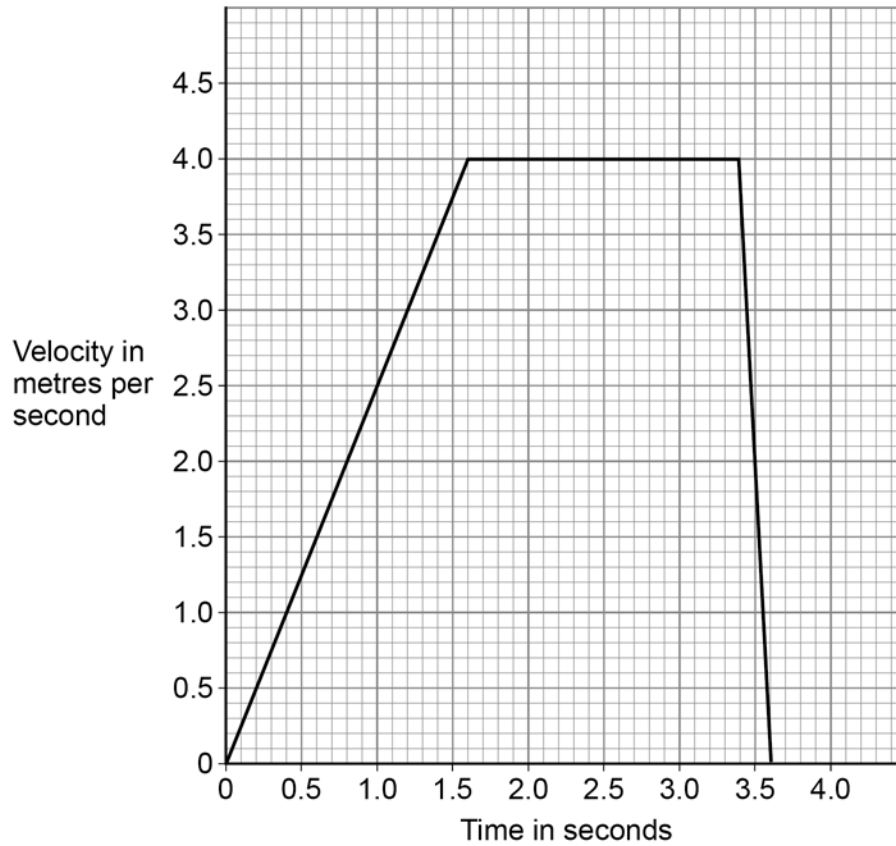
Question 2 continues on the next page

Turn over ►



Figure 3 shows a velocity–time graph for the player running with the ball.

Figure 3



0 2 . 3

Determine the acceleration of the player between 0 and 1.6 s.

[2 marks]

Acceleration = _____ m/s²

0 2 . 4

Describe the motion of the player between 3.4 s and 3.6 s.

[1 mark]



The force exerted on the player when she is tackled causes her to accelerate.

0 2 . 5

Write down the equation which links acceleration (a), mass (m) and resultant force (F).

[1 mark]

0 2 . 6

The player accelerates at 25 m/s^2 when a resultant force of 1800 N acts on her.

Calculate the mass of the player.

[3 marks]

Mass = _____ kg

0 2 . 7

The tracking device sends data to a computer during the game.

Suggest **one** advantage of the data being sent during the game.

[1 mark]

10

Turn over for the next question

Turn over ►



0 3

A student made water waves in a ripple tank.

0 3 . 1

Describe how the frequency and wavelength of the water waves in the ripple tank can be measured accurately.

[4 marks]

The student recorded values for the frequency and the wavelength of waves in the ripple tank.

Table 1 and **Table 2** show the results.

Table 1

| Reading | 1 | 2 | 3 |
|--------------------|-----|-----|-----|
| Frequency in hertz | 9.8 | 9.4 | 9.3 |

Table 2

| Reading | 1 | 2 | 3 |
|------------------|-----|-----|-----|
| Wavelength in cm | 1.7 | 2.2 | 2.1 |



0 3 . 2

Determine the mean wave speed.

[4 marks]

Mean wave speed = _____ m/s

0 3 . 3

What is the advantage of taking repeat readings and then calculating a mean?

[1 mark]

0 3 . 4

The speed of the wave is affected by the depth of the water in the ripple tank.

The deeper the water the faster the wave.

Explain how the depth of the water affects the wavelength of the wave if the frequency is constant.

[2 marks]

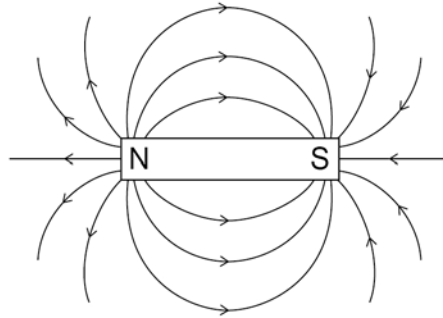
Turn over ►



0 4

Figure 4 shows the magnetic field pattern around a permanent magnet.

Figure 4



0 4 . 1

Where is the magnetic field of the magnet the strongest?

[1 mark]

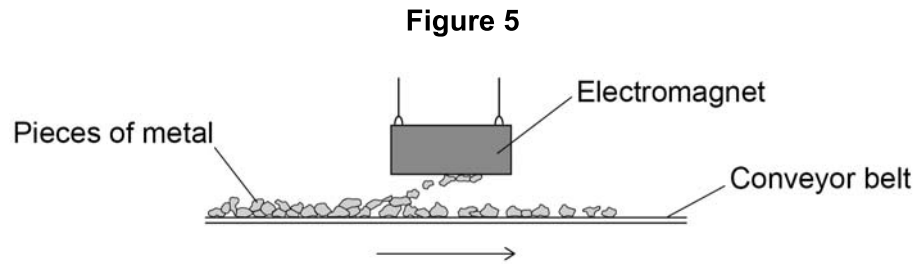
0 4 . 2

How does **Figure 4** show that the strength of the magnetic field is not the same at all places?

[1 mark]



Figure 5 shows an electromagnet being used to separate iron and steel from non-magnetic metals.



0 4 . 3

Explain **one** reason why an electromagnet is used instead of a permanent magnet.

[2 marks]

0 4 . 4

Pieces of iron and steel are attracted to the electromagnet.

Name **two** other metals that would be attracted to the electromagnet.

[2 marks]

1 _____

2 _____

0 4 . 5

The design of the electromagnet **cannot** be changed.

Give **two** ways the force exerted by the electromagnet on a piece of iron or steel could be increased.

[2 marks]

1 _____

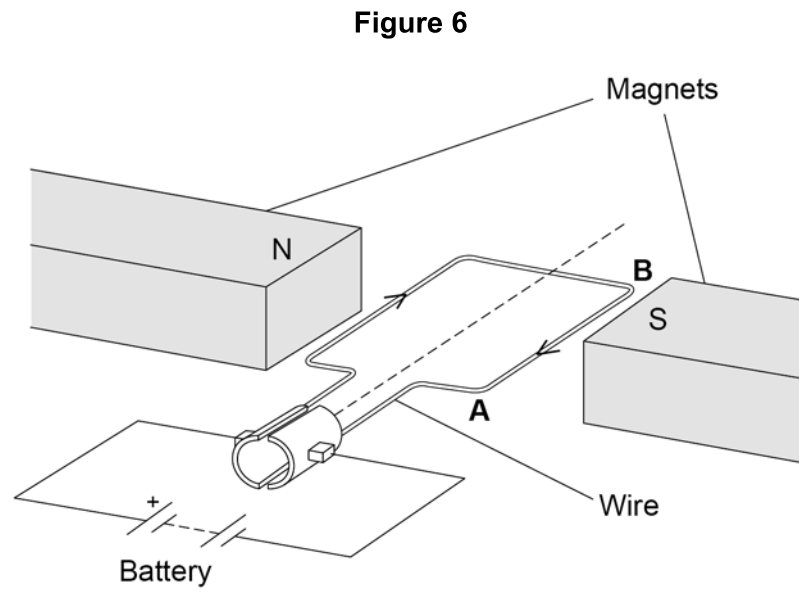
2 _____

Turn over ►



The conveyor belt that moves the pieces of metal is driven by an electric motor.

Figure 6 shows a simple electric motor.



0 4 . 6

The length of the wire **AB** in the magnetic field is 120 mm.

There is a current of 4.0 A in the wire. The length of wire **AB** experiences a force of 0.36 N.

Calculate the magnetic flux density between the magnets.

Give the unit.

[5 marks]

Magnetic flux density = _____ Unit _____

Question 4 continues on the next page

Turn over ►



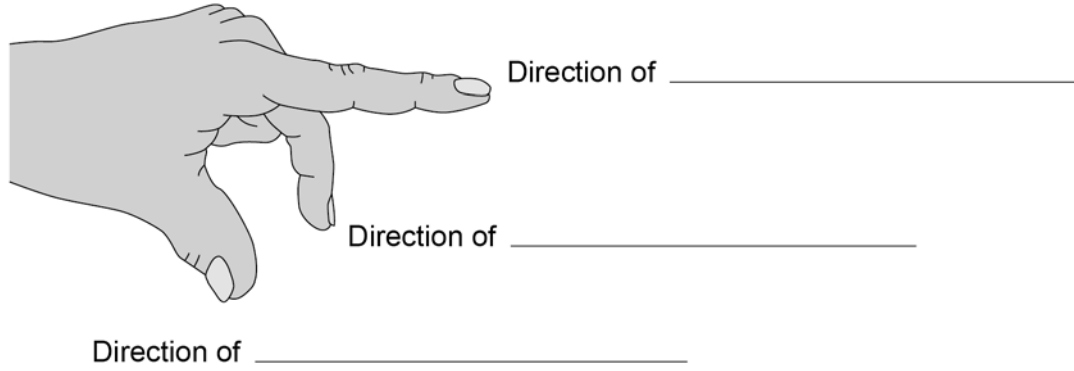
0 4 . 7

Fleming's left-hand rule can be used to determine the direction of the force on wire **AB**.

Complete the labels on **Figure 7** to show Fleming's left-hand rule.

[2 marks]

Figure 7



15

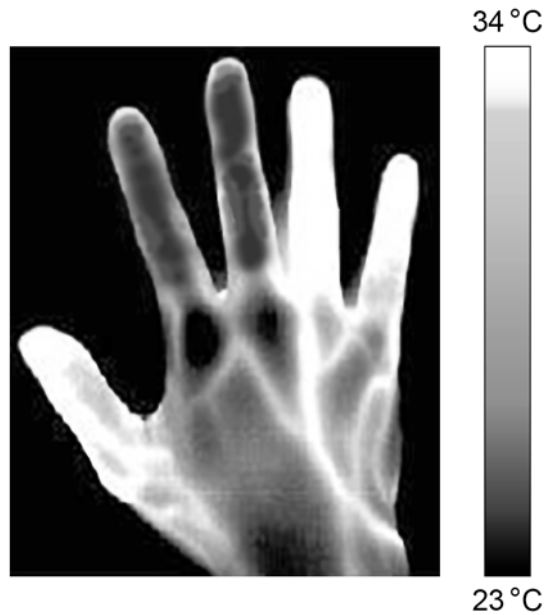


0 5

Different parts of the electromagnetic spectrum are used in medical imaging.

Figure 8 shows an image of a person's hand taken with an infrared camera.

Figure 8



0 5 1

Explain why the infrared camera is able to show that parts of the hand are at different temperatures.

[2 marks]

Question 5 continues on the next page

Turn over ►



0 5 . 2 Infrared has a range of wavelengths from 700 nm to 1 mm.

Which part of the electromagnetic spectrum would have waves with a wavelength of 6.5×10^{-7} m?

[1 mark]

Tick (✓) **one** box.

Infrared

Microwaves

Radio waves

Visible light



0 5 . 3

Figure 9 shows X-rays and gamma rays being used for medical imaging.

Figure 9

X-rays



Gamma rays



To use X-rays for medical imaging, a machine produces a very brief burst of X-rays.

To use gamma rays for medical imaging, a radioactive isotope is injected into the patient's blood. The isotope is circulated around the body in the blood. The isotope emits gamma rays.

Compare the potential risks to a patient of using X-rays and gamma rays for medical imaging.

[4 marks]

Question 5 continues on the next page

Turn over ►



X-rays are produced by colliding high-energy electrons into a metal target.

The electrons have high energy because they are accelerated to high speeds.

Only a small proportion of the kinetic energy of an electron is converted into an X-ray when it collides with the metal target.

0 5 . 4

An electron is accelerated through a distance of 15 mm.

The work done on the electron is 1.2×10^{-13} J.

Calculate the force on the electron.

[3 marks]

Force = _____ N

0 5 . 5

The metal target is made from tungsten.

Tungsten has the highest melting point of any metal.

Explain why using tungsten as the metal target enables the X-ray machine to be more powerful.

[3 marks]



There are no questions printed on this page

*Do not write
outside the
box*

**DO NOT WRITE ON THIS PAGE
ANSWER IN THE SPACES PROVIDED**



There are no questions printed on this page

*Do not write
outside the
box*

**DO NOT WRITE ON THIS PAGE
ANSWER IN THE SPACES PROVIDED**

Copyright information

For confidentiality purposes, all acknowledgements of third-party copyright material are published in a separate booklet. This booklet is published after each live examination series and is available for free download from www.aqa.org.uk.

Permission to reproduce all copyright material has been applied for. In some cases, efforts to contact copyright-holders may have been unsuccessful and AQA will be happy to rectify any omissions of acknowledgements. If you have any queries please contact the Copyright Team.

Copyright © 2021 AQA and its licensors. All rights reserved.



2 8



2 1 6 G 8 4 6 4 / P / 2 H

IB/M/Jun21/8464/P/2H