

Please write clearly in block capitals.

Centre number

Candidate number

Surname \_\_\_\_\_

Forename(s) \_\_\_\_\_

Candidate signature \_\_\_\_\_

I declare this is my own work.

# GCSE BIOLOGY

# H

Higher Tier Paper 1H

Tuesday 16 May 2023

Morning

Time allowed: 1 hour 45 minutes

## Materials

For this paper you must have:

- a ruler
- a scientific calculator.

## Instructions

- Use black ink or black ball-point pen.
- Pencil should only be used for drawing.
- Fill in the boxes at the top of this page.
- Answer **all** questions in the spaces provided.
- If you need extra space for your answer(s), use the lined pages at the end of this book. Write the question number against your answer(s).
- Do **all** rough work in this book. Cross through any work you do not want to be marked.
- In **all** calculations, show clearly how you work out your answer.

## Information

- The maximum mark for this paper is 100.
- The marks for questions are shown in brackets.
- You are expected to use a calculator where appropriate.
- You are reminded of the need for good English and clear presentation in your answers.

For Examiner's Use	
Question	Mark
1	
2	
3	
4	
5	
6	
<b>TOTAL</b>	



**There are no questions printed on this page**

*Do not write  
outside the  
box*

**DO NOT WRITE ON THIS PAGE  
ANSWER IN THE SPACES PROVIDED**



Answer **all** questions in the spaces provided.

0 1

A root is a plant organ.

Plant roots contain many different types of tissue.

0 1 . 1

What is a tissue?

[1 mark]

---

---

0 1 . 2

Tissue in the tip of a plant root contains stem cells.

Stem cells can differentiate into any type of cell.

Name the type of tissue in plants that contains stem cells.

[1 mark]

---

In the past many drugs were extracted from plants.

0 1 . 3

Aspirin is a painkiller.

Which plant does aspirin originate from?

[1 mark]

---

Question 1 continues on the next page

Turn over ►



Scientists have extracted chemical **A** from the deadly nightshade plant.

Chemical **A** can be used as a painkiller.

**Table 1** shows information about where chemical **A** is found.

**Table 1**

<b>Part of deadly nightshade plant</b>	<b>Mass of chemical A in 100 g of plant tissue in grams</b>
Roots	1.3
Leaves	1.2
Berries	0.7

0 1 . 4

The scientists usually extract chemical **A** from the berries of the deadly nightshade plant.

Suggest **one** reason why berries are used instead of leaves or roots.

**[1 mark]**

---

---



A deadly nightshade plant has chlorosis (yellow leaves).

The mass of chemical **A** found in the **leaves** of the plant is 60% of the mass shown in **Table 1**.

0 1 . 5

Calculate the mass of chemical **A** in 200 g of the **leaves** with chlorosis.

Give your answer in mg.

[4 marks]

---

---

---

---

---

---

---

---

Mass of chemical **A** = \_\_\_\_\_ mg

0 1 . 6

Suggest **one** reason why the leaves of the deadly nightshade plant have chlorosis.

[1 mark]

---

---

Question 1 continues on the next page

Turn over ►



Chemical **A** has **not** been tested in **large-scale clinical trials** in the UK.

0 1 . 7

It is important for drugs to be tested in **clinical trials** before the drugs are approved for use by the public.

Give **two** reasons why.

[2 marks]

1 \_\_\_\_\_

\_\_\_\_\_

2 \_\_\_\_\_

\_\_\_\_\_

There are many online reports making **claims** about the effects of chemical **A**.

Some of these reports are biased.

0 1 . 8

Suggest **one** reason why a report making **claims** about the effects of chemical **A** may be biased.

[1 mark]

\_\_\_\_\_

\_\_\_\_\_



0 1 . 9

How can scientists be sure that claims about new drugs are valid?

**[1 mark]**Tick (✓) **one** box.

Advertise the claims on social media.

Ask an international company to produce the drug.

Have the claims peer reviewed.

Publish the claims in a newspaper.

---

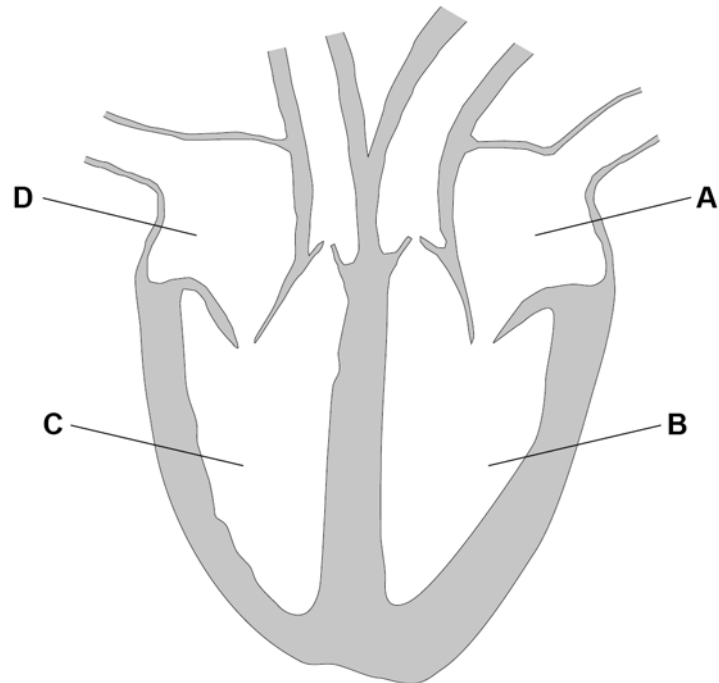
13**Turn over for the next question****Turn over ►**

0 2

This question is about the circulatory system.

**Figure 1** shows the human heart.

**Figure 1**



0 2 . 1

Which part of the heart receives oxygenated blood from the lungs?

[1 mark]

Tick (✓) **one** box.

A       B       C       D

0 2 . 2

Which part of the heart pumps deoxygenated blood to the lungs?

[1 mark]

Tick (✓) **one** box.

A       B       C       D





**0 2 . 3** A group of cells called the pacemaker controls the resting heart rate.

Where in the heart is the pacemaker found?

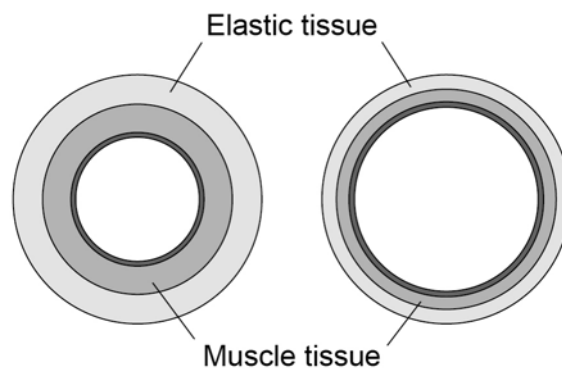
**[1 mark]**

Tick (✓) **one** box.

- |                 |                          |
|-----------------|--------------------------|
| Left atrium     | <input type="checkbox"/> |
| Left ventricle  | <input type="checkbox"/> |
| Right atrium    | <input type="checkbox"/> |
| Right ventricle | <input type="checkbox"/> |

**0 2 . 4** **Figure 2** shows a cross section of an artery and of a vein.

**Figure 2**



Describe **two** ways that the structure of an artery is different from the structure of a vein.

**[2 marks]**

- 1 \_\_\_\_\_
- \_\_\_\_\_
- 2 \_\_\_\_\_
- \_\_\_\_\_

**Question 2 continues on the next page**

**Turn over ►**



**0 2 . 5** In coronary heart disease, the coronary arteries become narrower.

A build-up of fatty material can cause a blockage in a coronary artery.

**Table 2** shows how a blockage in a coronary artery affects blood flow.

**Table 2**

Percentage (%) of coronary artery that is blocked	Blood flow in cm <sup>3</sup> /minute
0	100
10	64
20	42
50	8
80	2

Describe the trend shown in **Table 2**.

**[1 mark]**

---

---



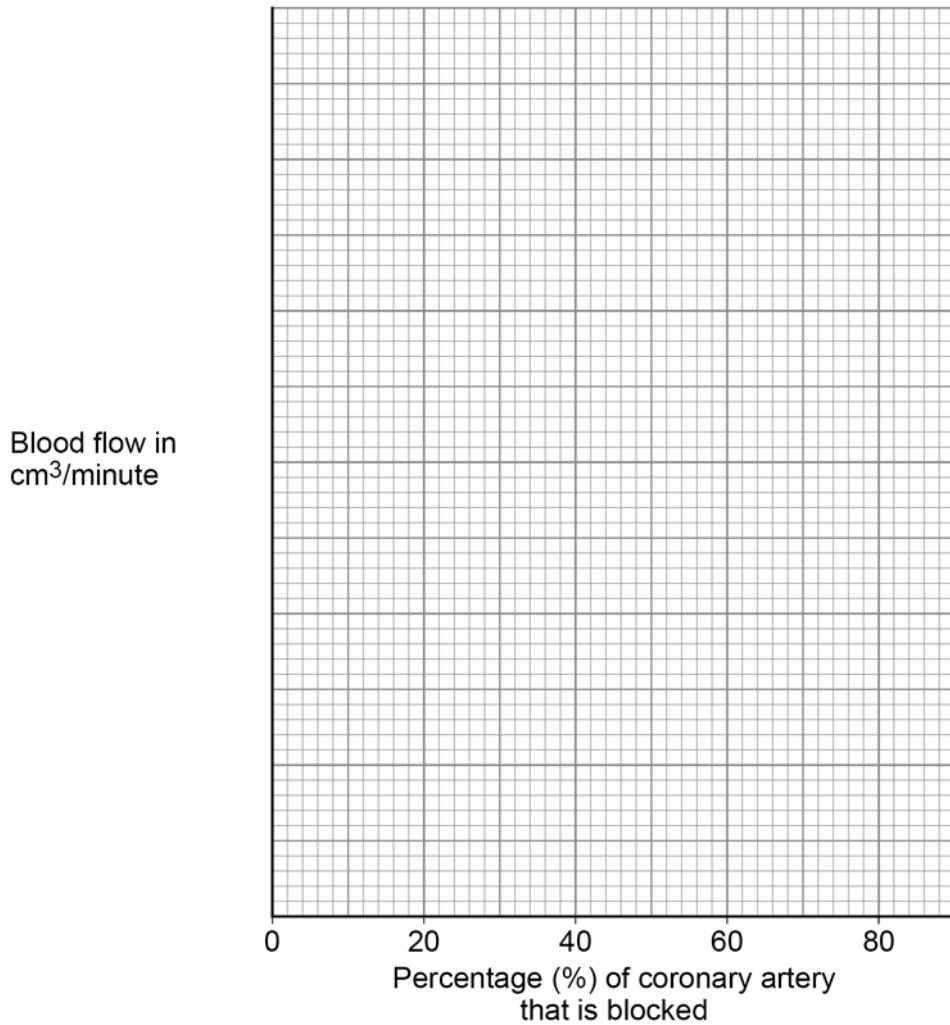
**0 2 . 6** Complete **Figure 3**.

You should:

- use a suitable scale for the y-axis
- plot the data from **Table 2**
- draw a line of best fit.

**[4 marks]**

**Figure 3**



**0 2 . 7** Predict the blood flow in a coronary artery with a 35% blockage.

Use **Figure 3**.

**[1 mark]**

Blood flow = \_\_\_\_\_ cm<sup>3</sup>/minute

**Question 2 continues on the next page**

**Turn over ►**



0 2 . 8

Explain the effect of a partly blocked coronary artery on the human body.

[6 marks]

---

---

---

---

---

---

---

---

---

---

---

---

---

---

---

---

---

---

---

---

---

---

---

0 2 . 9

There are different treatments for a blockage in a coronary artery.

Explain how **one** treatment for a blockage in a coronary artery works.

[2 marks]

---

---

---

---

---



0 3

*Salmonella* bacteria cause outbreaks of food poisoning in humans.

To prevent food poisoning in humans, farmers vaccinate their animals against *Salmonella* bacteria.

0 3 . 1

How do *Salmonella* bacteria in food cause the symptoms of vomiting and diarrhoea?

[1 mark]

---

---

During a food poisoning outbreak, scientists identified the farm where the food came from.

The farmer had **not** vaccinated the farm animals against *Salmonella* bacteria.

0 3 . 2

The food poisoning outbreak could have been prevented if the farm animals had been vaccinated.

Explain how:

- the immune systems of animals respond to a vaccination
- the immune response in farm animals prevents an outbreak of food poisoning in humans.

[4 marks]

---

---

---

---

---

---

---

---

---

---

Question 3 continues on the next page

Turn over ►



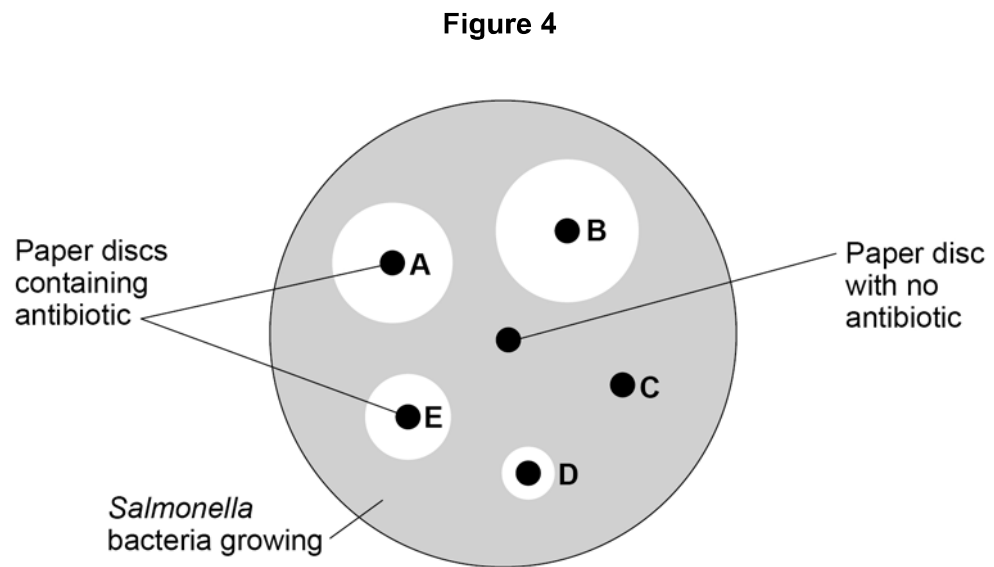
Most cases of food poisoning do **not** need to be treated with antibiotics.

However, some patients may need to take antibiotics to recover.

Scientists investigated the effectiveness of five different antibiotics on the *Salmonella* bacteria in the outbreak.

Antibiotics **A**, **B**, **C**, **D** and **E** were used in the investigation.

**Figure 4** shows the results.



0 3 . 3

Describe **two** aseptic techniques the scientists should have used in the investigation.

**[2 marks]**

1 \_\_\_\_\_

\_\_\_\_\_

2 \_\_\_\_\_

\_\_\_\_\_



0 3 . 4

The scientists incubated the bacteria at 37 °C.  
Students in school laboratories incubate bacteria at 25 °C.

Explain why scientists use 37 °C but students must use 25 °C to incubate bacteria.

[3 marks]

---



---



---



---



---

0 3 . 5

What is the purpose of the paper disc with no antibiotic in **Figure 4**?

[1 mark]

---



---

0 3 . 6

The scientists concluded that either antibiotic **A** or antibiotic **B** should be prescribed to patients with food poisoning.

Why should antibiotic **A** or antibiotic **B** be prescribed?

[1 mark]

---



---

0 3 . 7

The scientists wanted to be more certain about which antibiotic should be prescribed.

Describe how the results in **Figure 4** could be used to obtain a **quantitative** comparison of antibiotics **A** and **B**.

[1 mark]

---



---

Turn over ►



0 3 . 8

One year later, there was another outbreak at the farm involving *Salmonella* bacteria.

Antibiotic **B** did **not** have an effect.

Suggest why antibiotic **B** no longer had an effect.

[1 mark]

---

---

0 3 . 9

Antibiotics treat food poisoning because they kill *Salmonella* bacteria inside the human body.

Some antibiotics work because they damage the bacterial cell wall.

The bacteria die because the cells burst.

Explain why the cells burst.

[3 marks]

---

---

---

---

---

---

---

17





**Turn over for the next question**

*Do not write  
outside the  
box*

**DO NOT WRITE ON THIS PAGE  
ANSWER IN THE SPACES PROVIDED**

**Turn over ►**



0	4
---	---

This question is about exercise.

0	4	.	1
---	---	---	---

During vigorous exercise, anaerobic respiration occurs in a person's body.

Explain **two** effects of anaerobic respiration on the person's body.

**[4 marks]**

1

---

---

---

2

---

---

---



0 4 . 2

Design an investigation to show the effect of different types of exercise on the heart rate of athletes.

[6 marks]

---

---

---

---

---

---

---

---

---

---

---

---

---

---

---

---

---

---

---

---

---

---

---

Question 4 continues on the next page

Turn over ►



Anabolic steroids are drugs.

Anabolic steroids:

- increase muscle mass in humans
- are banned in most competitive sports.

Some athletes take anabolic steroids to improve their performance in sport.

0 4 . 3

Explain how taking anabolic steroids could improve an athlete's performance.

[2 marks]

---

---

---

---

Scientists use monoclonal antibodies to test for the presence of anabolic steroids in an athlete's urine.

To produce monoclonal antibodies, a mouse lymphocyte is combined with a tumour cell.

0 4 . 4

What type of cell is created when a mouse lymphocyte and a tumour cell combine?

[1 mark]

Tick (✓) **one** box.

Embryo

Hybridoma

Phagocyte

Stem cell



0 4 . 5

Describe how scientists make monoclonal antibodies using the cell created when a mouse lymphocyte and a tumour cell combine.

**[3 marks]**

---

---

---

---

---

---

0 4 . 6

What property makes a monoclonal antibody useful in detecting the presence of an anabolic steroid in urine?

**[1 mark]**

Tick (✓) **one** box.

A monoclonal antibody is quick and easy to produce.

A monoclonal antibody is specific to only one person's urine.

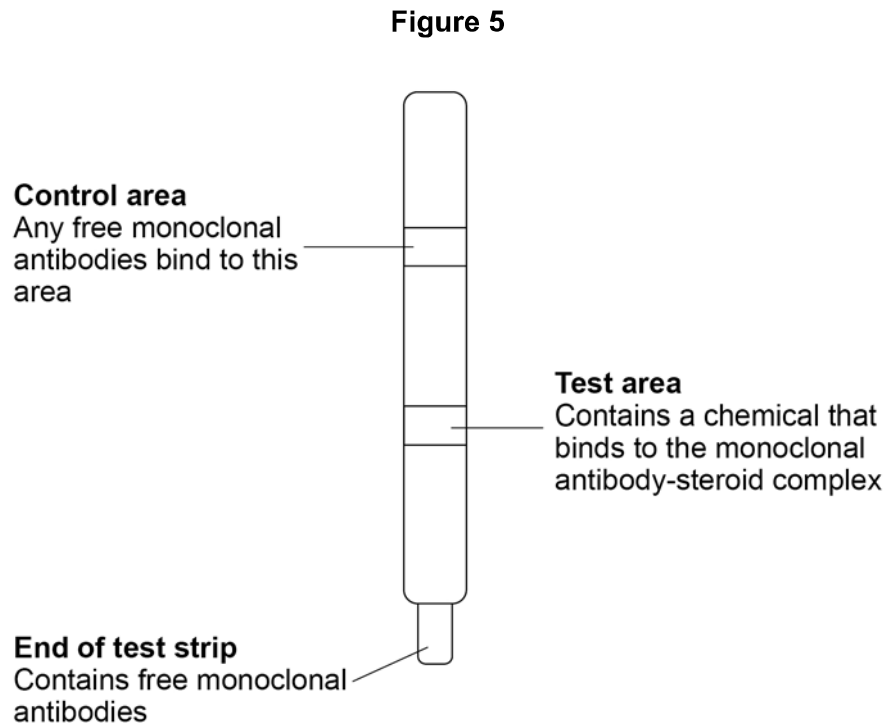
A monoclonal antibody only binds to the anabolic steroid.

A monoclonal antibody can identify many different drugs at the same time.

**Question 4 continues on the next page**

**Turn over ►**

**Figure 5** shows a test strip that can detect the presence of an anabolic steroid in an athlete's urine.



The end of the test strip is dipped in urine.

The urine moves up through the test strip.

The test area and the control area contain a dye.  
The dye turns blue when monoclonal antibodies bind to it.

0 4 . 7

Suggest the purpose of the control area in the test strip.

[1 mark]

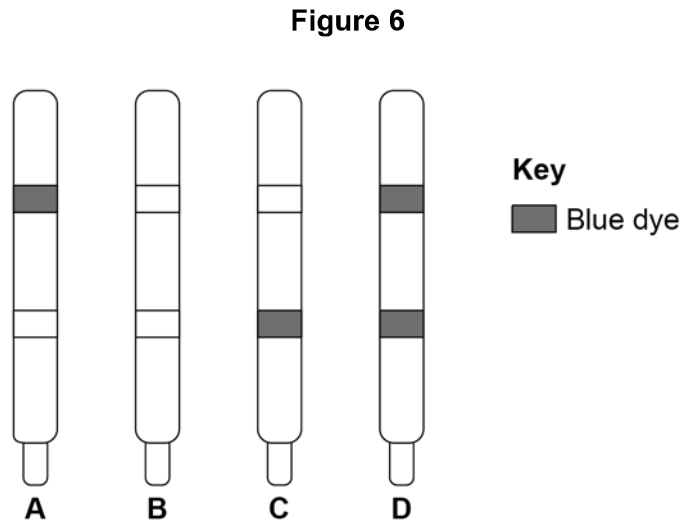
---



---



Figure 6 shows the urine test results of four athletes.



0 4 . 8

Describe the evidence in **Figure 6** that shows the test for athlete **B** has **not** worked.

Suggest **one** reason why the test did **not** work.

[2 marks]

Evidence \_\_\_\_\_

\_\_\_\_\_

Reason \_\_\_\_\_

\_\_\_\_\_

0 4 . 9

Which athlete has tested positive for anabolic steroids in their urine?

[1 mark]

Tick (✓) **one** box.

A

B

C

D

21

Turn over ►



0 5

The protist that causes malaria is passed from one person to another person by mosquitos.

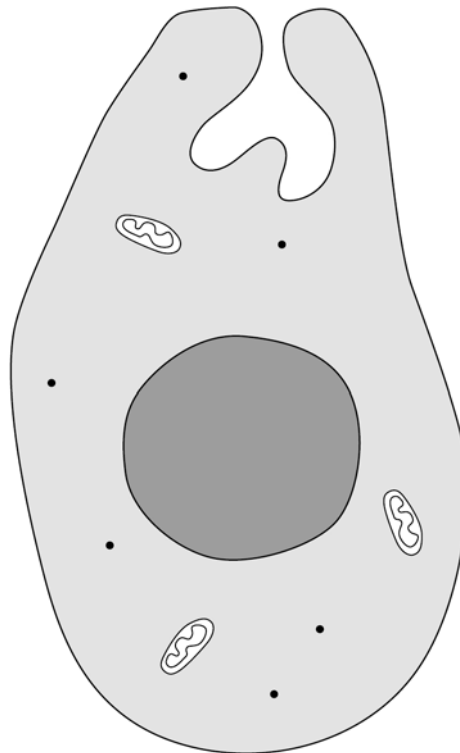
0 5 . 1

What term describes an organism that passes a pathogen from one person to another person?

**[1 mark]**

0 5 . 2

**Figure 7** shows the malarial protist.

**Figure 7**



The malarial protist is a eukaryotic cell.

Describe **three** ways the structure of the malarial protist is different from the structure of a prokaryotic cell.

Do **not** refer to size in your answer.

**[3 marks]**

1 \_\_\_\_\_

2 \_\_\_\_\_

3 \_\_\_\_\_

**0 5 . 3**

During one stage of malaria infection, the malarial protists enter red blood cells and cause them to burst.

Explain why the bursting of red blood cells causes tiredness.

**[2 marks]**

\_\_\_\_\_

\_\_\_\_\_

\_\_\_\_\_

\_\_\_\_\_

**Question 5 continues on the next page**

**Turn over ►**



**0 5 . 4** The malarial protist reproduces sexually and asexually during a life cycle.

Complete **Table 3** to give **three** differences between sexual reproduction and asexual reproduction.

**[3 marks]**

One difference has been completed for you.

**Table 3**

	<b>Sexual reproduction</b>	<b>Asexual reproduction</b>
	Involves two parents	Involves one parent
<b>1</b>		
<b>2</b>		
<b>3</b>		

**0 5 . 5** One drug for treating malaria prevents mitosis occurring in the malarial protist.

The drug stops the synthesis of new DNA bases in the cell.

Suggest how the drug prevents mitosis occurring.

**[1 mark]**

---



---



0 5 . 6

Describe the process of cell division by mitosis.

[3 marks]

---

---

---

---

---

---

---

Question 5 continues on the next page

Turn over ►



**0 5 . 7** Different types of disease may interact.

Scientists studied the incidence of malaria infections in children:

- with disorder **S**
- without disorder **S**.

The incidence of malaria in children with disorder **S** was calculated as a percentage of the incidence in children without disorder **S**.

**Table 4** shows the results.

**Table 4**

Age in years	Calculated percentage (%) incidence of malaria in children with disorder <b>S</b>
2 to < 4	69
4 to < 6	63
6 to < 8	50
8 to 10	45
> 10	73

Describe what the results in **Table 4** show about the interaction between disorder **S** and malaria.

**[2 marks]**

---



---



---



---



---



---



---

**15**



**Turn over for the next question**

*Do not write  
outside the  
box*

**DO NOT WRITE ON THIS PAGE  
ANSWER IN THE SPACES PROVIDED**

**Turn over ►**



0 6

This question is about photosynthesis.

0 6 . 1

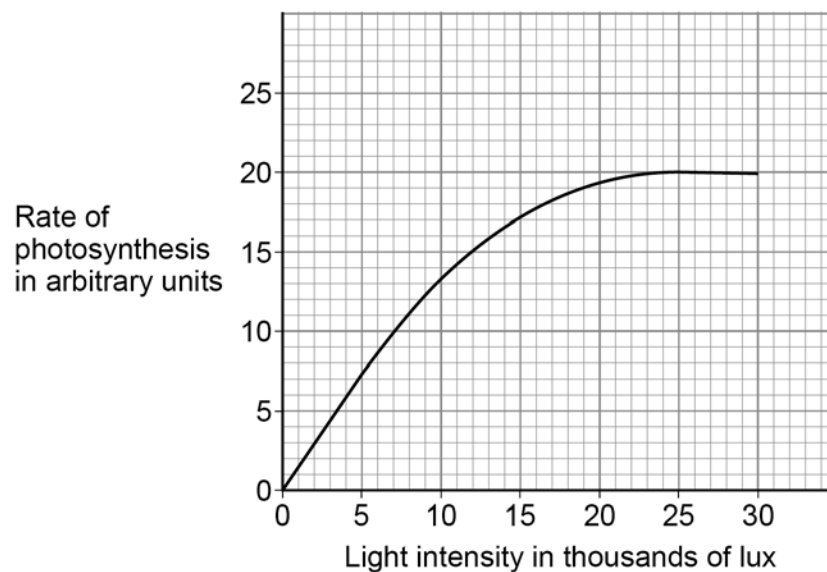
Complete the symbol equation for photosynthesis.

[1 mark]



Figure 8 shows how the rate of photosynthesis changes with light intensity.

Figure 8



**0 6 . 2** Which part of the graph could be represented by the equation  $y = mx + c$  ?

**[1 mark]**

Tick (✓) **one** box.

From 0 to 5 000 lux

From 10 000 to 15 000 lux

From 15 000 to 20 000 lux

From 20 000 to 25 000 lux

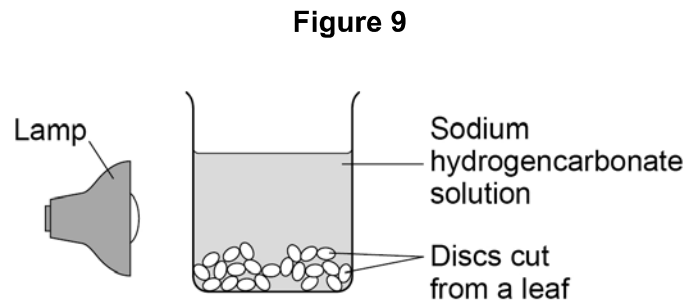
**Question 6 continues on the next page**

**Turn over ►**



A student investigated the effect of colour of light on the rate of photosynthesis in leaves.

**Figure 9** shows how the investigation was set up.



**Table 5** shows the results.

**Table 5**

Colour of light	Time taken for 10 leaf discs to reach the surface of the solution in seconds
Blue	115
Green	831
Red	397

0 6 . 3

Give **one** way the student could change the colour of the light shining on the leaf discs.

[1 mark]

---



---





0 6 . 4

Give the independent variable and the dependent variable in this investigation.

**[2 marks]**

Independent variable \_\_\_\_\_

\_\_\_\_\_

Dependent variable \_\_\_\_\_

\_\_\_\_\_

0 6 . 5

All of the air had to be removed from the leaf discs before placing them in the beaker.

Suggest **one** reason why.**[1 mark]**

\_\_\_\_\_

\_\_\_\_\_

0 6 . 6

The leaf discs were placed in a beaker of sodium hydrogencarbonate ( $\text{NaHCO}_3$ ) solution.

Explain why sodium hydrogencarbonate solution was used instead of water.

**[2 marks]**

\_\_\_\_\_

\_\_\_\_\_

\_\_\_\_\_

\_\_\_\_\_

0 6 . 7

Explain why the leaf discs moved to the surface of the solution during the investigation.

**[2 marks]**

\_\_\_\_\_

\_\_\_\_\_

\_\_\_\_\_

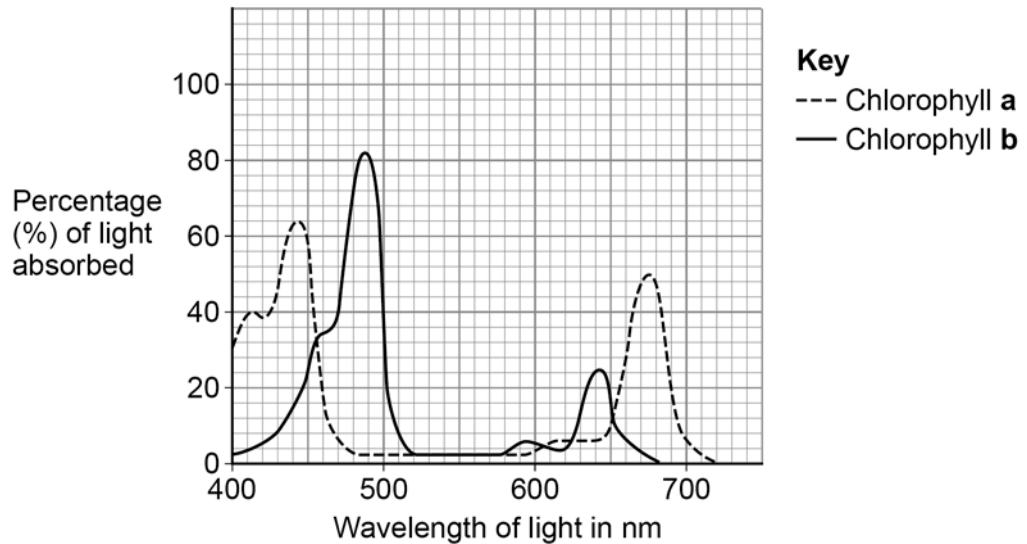
\_\_\_\_\_

**Turn over ►**

There are two types of chlorophyll in leaves.

**Figure 10** shows the percentage of different wavelengths of light that the two types of chlorophyll absorb.

**Figure 10**



**Table 6** shows the colour of different wavelengths of light.

**Table 6**

<b>Range of wavelength of light in nm</b>	380 – 435	450 – 499	500 – 570	571 – 590	620 – 720
<b>Colour of light</b>	violet	blue	green	yellow	red

0 6 . 8

Suggest the advantage to a plant of having two types of chlorophyll.

[1 mark]

---



---



0 6 . 9 Table 5 is repeated below.

**Table 5**

<b>Colour of light</b>	<b>Time taken for 10 leaf discs to reach the surface of the solution in seconds</b>
Blue	115
Green	831
Red	397

The leaf discs in the investigation are green.

Explain the results in **Table 5** for blue light and for green light.

Use data from **Figure 10** and **Table 6**.

**[4 marks]**

---



---



---



---



---



---



---



---



---



---

15

**END OF QUESTIONS**



**There are no questions printed on this page**

*Do not write  
outside the  
box*

**DO NOT WRITE ON THIS PAGE  
ANSWER IN THE SPACES PROVIDED**









**There are no questions printed on this page**

*Do not write  
outside the  
box*

**DO NOT WRITE ON THIS PAGE  
ANSWER IN THE SPACES PROVIDED**

**Copyright information**

For confidentiality purposes, all acknowledgements of third-party copyright material are published in a separate booklet. This booklet is published after each live examination series and is available for free download from [www.aqa.org.uk](http://www.aqa.org.uk).

Permission to reproduce all copyright material has been applied for. In some cases, efforts to contact copyright-holders may have been unsuccessful and AQA will be happy to rectify any omissions of acknowledgements. If you have any queries please contact the Copyright Team.

Copyright © 2023 AQA and its licensors. All rights reserved.



4 0



2 3 6 G 8 4 6 1 / 1 H

IB/M/Jun23/8461/1H