



Please write clearly in block capitals.

Centre number

--	--	--	--	--

Candidate number

--	--	--	--

Surname

Forename(s)

Candidate signature

I declare this is my own work.

AS PHYSICS

Paper 1

Time allowed: 1 hour 30 minutes

Materials

For this paper you must have:

- a pencil and a ruler
- a scientific calculator
- a Data and Formulae Booklet
- a protractor.

Instructions

- Use **black ink** or **black ball-point pen**.
- **Fill in** the boxes at the top of this page.
- Answer **all** questions.
- You must answer the questions in the spaces provided. Do not write outside the box around each page or on blank pages.
- If you need extra space for your answer(s), use the lined pages at the end of this book. Write the question number against your answer(s).
- Do **all** rough work in this book. Cross through any work you do not want to be marked.
- Show **all** your working.

Information

- The marks for questions are shown in brackets.
- The maximum mark for this paper is 70.
- You are expected to use a scientific calculator where appropriate.
- A Data and Formulae Booklet is provided as a loose insert.

For Examiner's Use	
Question	Mark
1	
2	
3	
4	
5	
6	
7	
8	
TOTAL	



J U N 2 2 7 4 0 7 1 0 1

1B/M/Jun22/E8

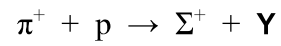
7407/1

Answer **all** questions in the spaces provided.

0 1

A sigma-plus (Σ^+) particle and an unidentified particle **Y** are produced by the strong interaction between a positive pion (π^+) and a proton (p).

This interaction is represented by the equation:



0 1 . 1

Complete **Table 1** to show the baryon number B , charge Q and strangeness S for the particles in this interaction.

[2 marks]

Table 1

	π^+	p	Σ^+	Y
B				0
Q	+1	+1	+1	
S				+1

0 1 . 2

Which particle in **Table 1** has the quark structure uus?

Tick (✓) **one** box.

[1 mark]

π^+

p

Σ^+

Y



0 2

A sample of bromine gas contains a mixture of two isotopes. An experiment is done to find the percentage of each isotope in this sample.

0 2 . 1

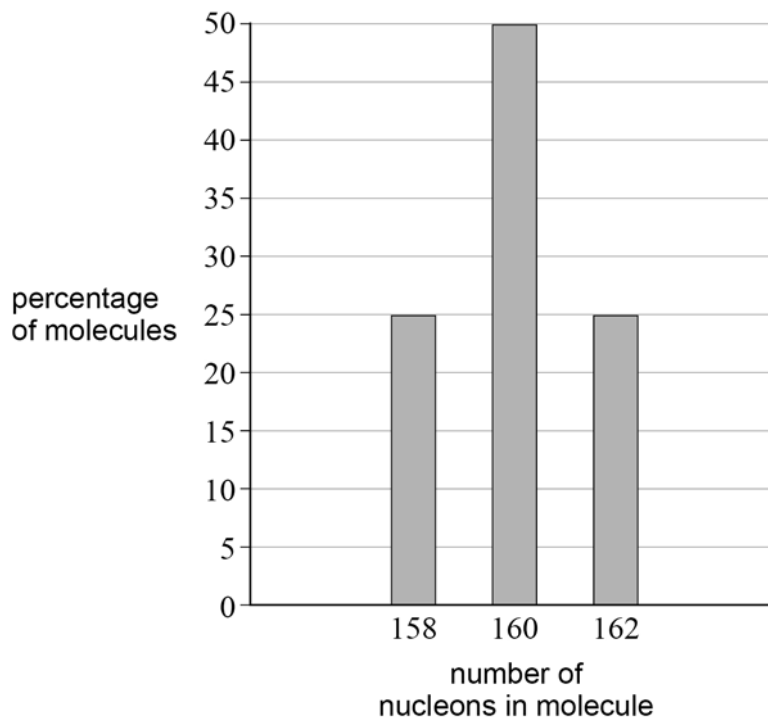
In the experiment, the gas is ionised by a beam of electrons.

Explain how the beam of electrons causes a particle of the gas to have a charge of $+1e$.

[2 marks]

The gas consists of bromine molecules. Each molecule has two bromine atoms. The experiment finds that the bromine molecules contain 158, 160 or 162 nucleons.

Figure 1 shows the percentage of these different molecules in the sample.

Figure 1

0 2 . 2

Bromine has a proton number of 35
The two isotopes in the sample have different nucleon numbers.

Calculate the number of neutrons for the isotope that has the greater nucleon number.
[2 marks]

number of neutrons = _____

0 2 . 3

Deduce the percentage of each isotope in the gas.
Justify your conclusion.

[2 marks]

6

Turn over for the next question

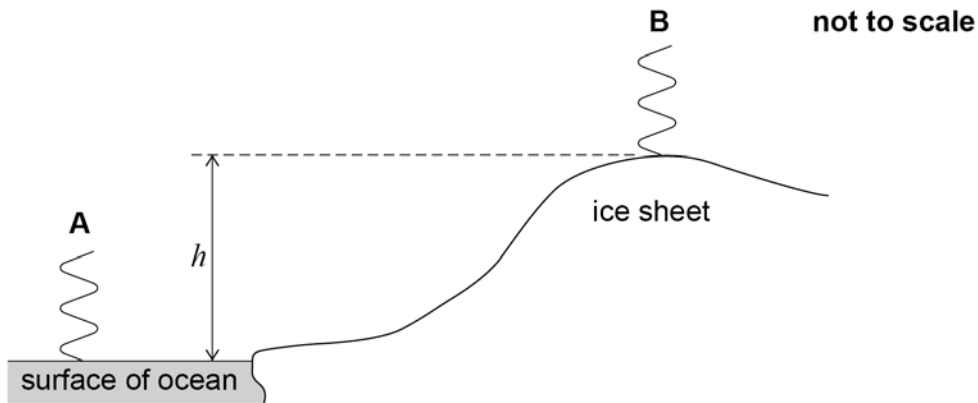
Turn over ►

0 3

A satellite system is used to measure the height h of the top of an ice sheet above the surface of the ocean.

The satellite emits two pulses **A** and **B** of infrared radiation. **A** is incident on the surface of the ocean and **B** is incident on the top of the ice sheet as shown in **Figure 2**.

Figure 2



0 3 . 1

The frequency of the infrared radiation is 3.8×10^{14} Hz.
Each pulse has a duration of 6.0 ns.

Calculate the number of cycles in each pulse.

[2 marks]

number of cycles = _____

0 3 . 2

A and **B** reflect and return to the satellite. The travel time is the time between the emission of a pulse and its return to the satellite.

The difference in the travel times of **A** and **B** is $10.7 \mu\text{s}$.

Calculate h .

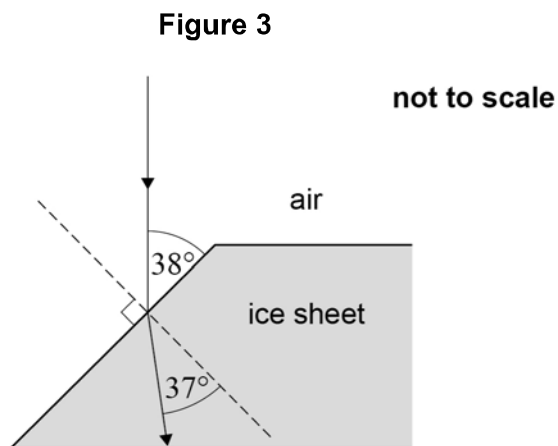
[2 marks]

$h =$ _____ m



Some of the infrared radiation enters the ice sheet.

Figure 3 shows the path of infrared radiation that refracts at a sloping part of the ice sheet.



0 3 . 3 Calculate the refractive index of the ice.

[2 marks]

refractive index = _____

0 3 . 4 Calculate the wavelength of the infrared radiation when it is inside the ice sheet.

[2 marks]

wavelength = _____ m

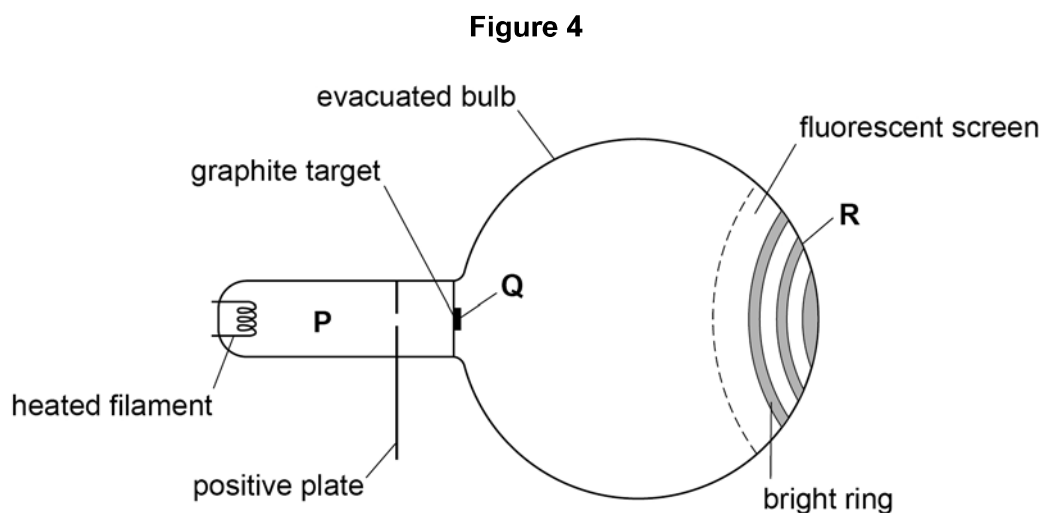
8

Turn over ►



0 5

Figure 4 shows apparatus used to demonstrate the wave–particle duality of electrons.



The heated filament emits slow-moving electrons.

In region **P**, the electrons are accelerated to a high speed.

At **Q**, the fast-moving electrons are incident on the graphite target.

R is a point on one of the bright rings that are formed where the electrons strike the fluorescent screen.

0 5 . 1

The electrons demonstrate wave-like and particle-like behaviour as they travel from the filament to the screen.

State and explain at which of **P**, **Q** or **R** the electrons are demonstrating wave-like behaviour.

[2 marks]



0	5	.	2
---	---	---	---

The apparatus is adjusted so that the electrons are incident on the graphite target with a greater speed.

Explain why the bright rings formed on the screen now have a smaller diameter.

[3 marks]

5

Turn over for the next question

Turn over ►

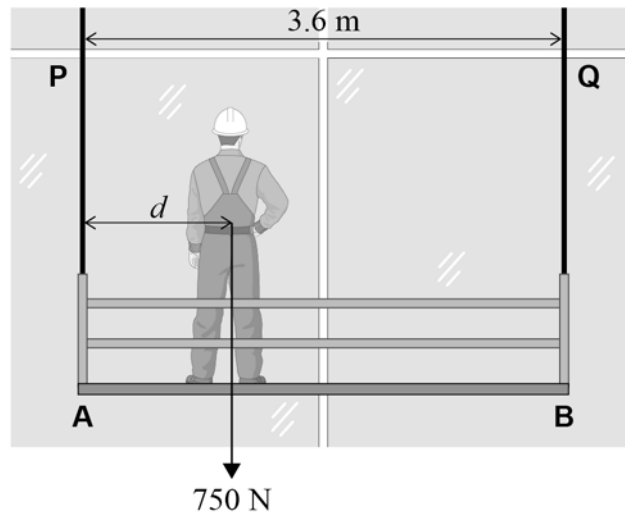


0 6

Figure 5 shows a worker of weight 750 N on a uniform platform. The weight of the worker is acting at a horizontal distance d from end **A**.

Throughout this question, assume that the platform is horizontal and that all cables obey Hooke's law.

Figure 5



The platform weighs 1800 N and is suspended by vertical cables **P** and **Q**. Each cable has an unstretched length of 3.0 m. The horizontal distance between **P** and **Q** is 3.6 m.

0 6 . 1

The worker moves to a position where the tension in the left-hand cable **P** is 1150 N.

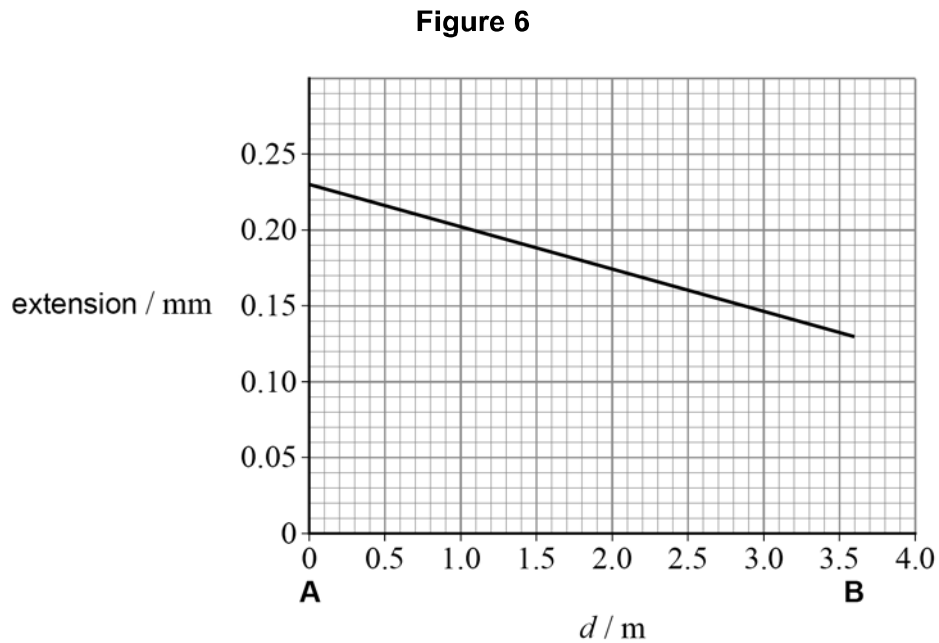
Calculate d for this position.

[3 marks]

$$d = \underline{\hspace{10em}} \text{ m}$$



Figure 6 shows how the extension of **P** varies with d as the worker walks slowly along the platform from **A** to **B**.



The worker moves to a position **X** where the strain in **P** is 6.0×10^{-5} .

0 6 . 2 Determine d for position **X**.

[2 marks]

$d =$ _____ m

0 6 . 3 The cable material has a Young modulus of $1.9 \times 10^{11} \text{ N m}^{-2}$.

Calculate the tensile stress in **P** when the worker is at **X**.

[1 mark]

tensile stress = _____ N m^{-2}

Question 6 continues on the next page

Turn over ►



0 6 . 4 The original cables **P** and **Q** are replaced.

Table 2 shows how the properties of the original cables compare with the replacement cables.

Table 2

	Unstretched length	Radius	Young modulus of cable material
Original cables	L	r	E
Replacement cables	L	$\frac{r}{2}$	$2E$



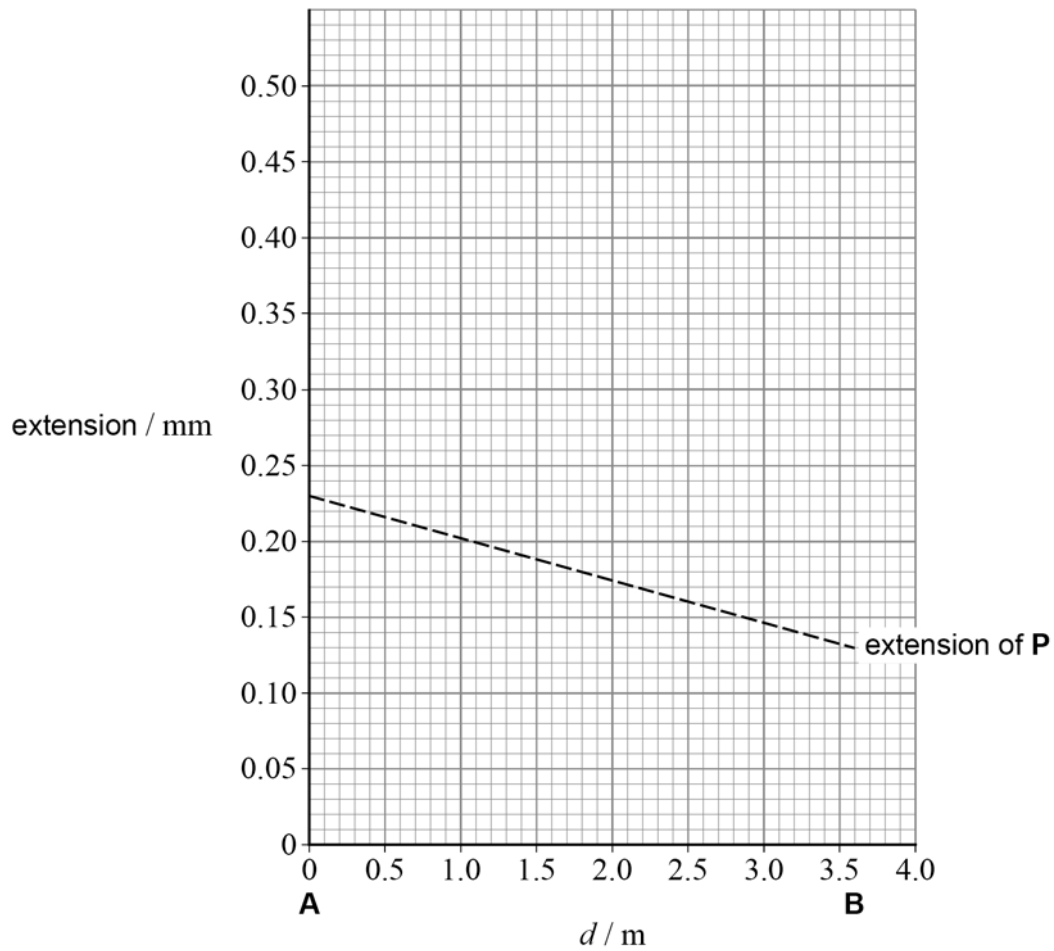
After the cables have been replaced, the worker walks slowly from **A** to **B**.

Draw on **Figure 7** a line to show the variation of the extension of the replacement left-hand cable with d .

The original line from **Figure 6** is shown on **Figure 7** as a dashed line to help you.

[3 marks]

Figure 7



9

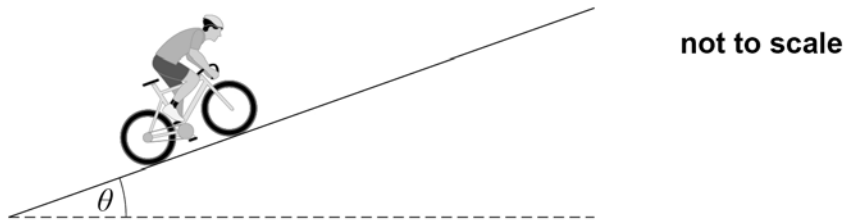
Turn over for the next question

Turn over ►



0 7 . 1 Figure 8 shows a cyclist going up a hill.

Figure 8



The angle θ of the slope of the hill is constant.
The total mass m of the cyclist and bicycle is 65 kg.

Write an expression for the component of the total weight parallel to the slope.

[1 mark]

0 7 . 2 The useful power output of the cyclist is 310 W.
The cyclist has a steady speed of 1.63 m s^{-1} .

Assume that air resistance is negligible at this speed.

Calculate θ .

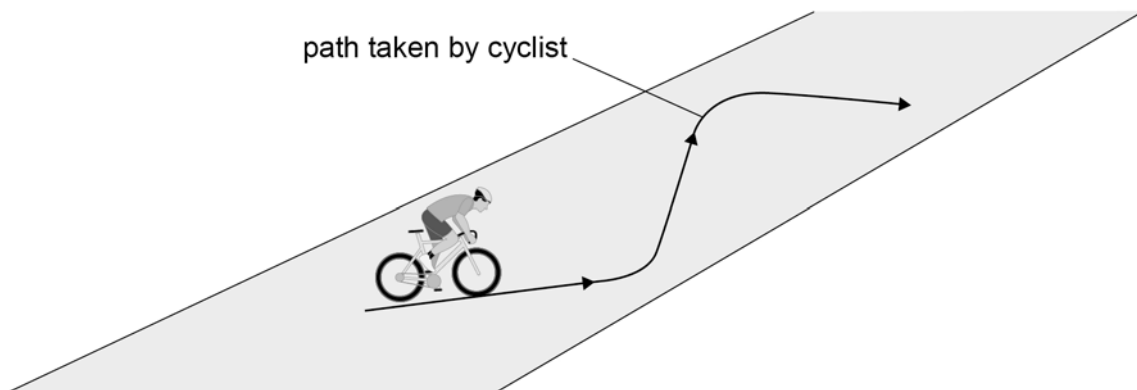
[2 marks]

$$\theta = \underline{\hspace{10em}}^\circ$$



Figure 9 shows an alternative 'zig-zag' path taken by the cyclist up the same hill. She maintains a steady speed of 1.63 m s^{-1} .

Figure 9



07.3

Discuss how her useful power output when taking the path in **Figure 9** compares with her useful power output in Question **07.2**.

[3 marks]

Question 7 continues on the next page

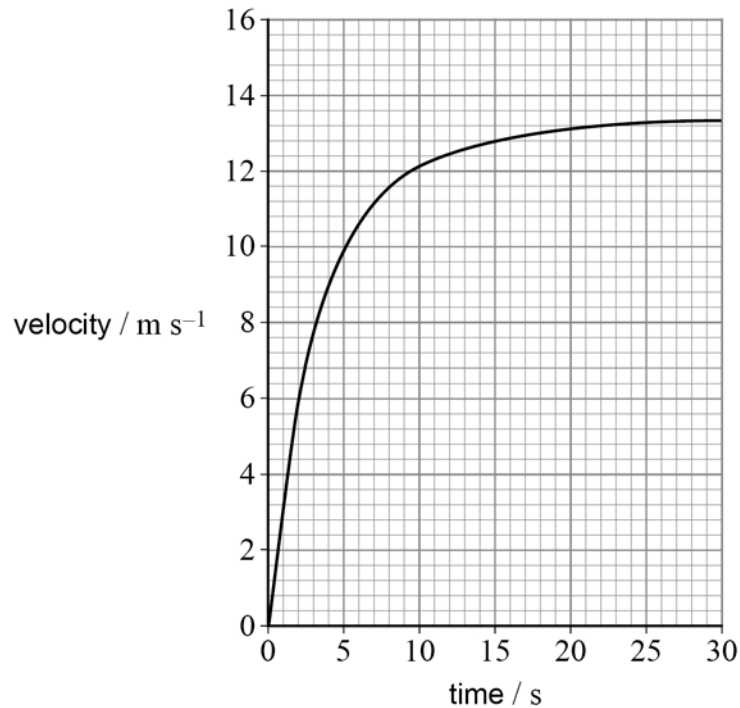
Turn over ►



The cyclist reaches the top of the hill. She then travels back down the hill in a straight line. The bicycle rolls freely without the cyclist pushing the pedals or applying the brakes.

Figure 10 shows the variation of her velocity with time as she goes down the hill.

Figure 10



0 7 . 4

Determine the acceleration of the cyclist 10.0 s after she begins to go down the hill.

[3 marks]

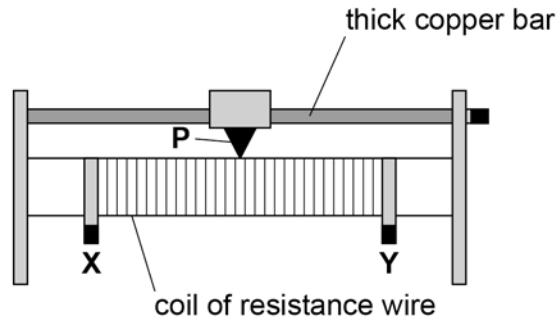
acceleration = _____ m s⁻²



0 8

Figure 11 shows a variable resistor that has a maximum resistance of 25Ω . A sliding contact **P** is mounted on a thick copper bar. **P** can be set to any position between **X** and **Y**.

Figure 11



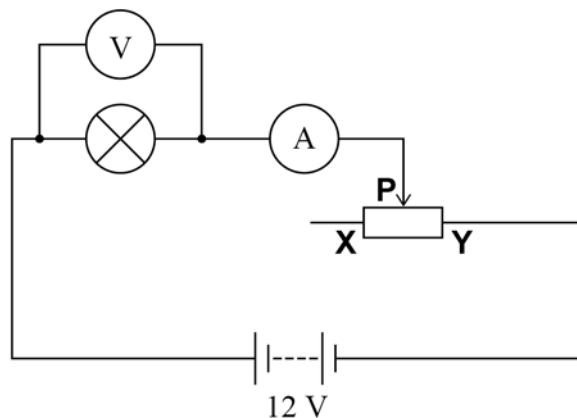
0 8 . 1

Figure 12 shows the variable resistor being used to investigate the variation of current with voltage for a filament lamp.

The normal operating voltage of the lamp is 12 V .

The 12 V battery has negligible internal resistance.

Figure 12



The position of **P** is adjusted so that the reading on the voltmeter is at its minimum value of 0.75 V .

Calculate the resistance of the lamp when the voltmeter reading is 0.75 V .

[2 marks]

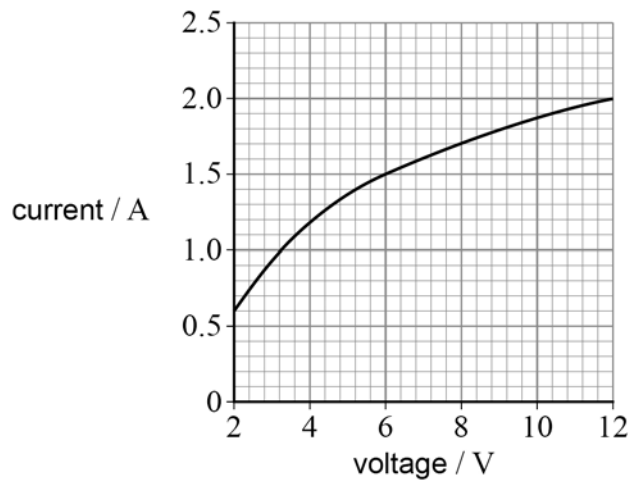
resistance = _____ Ω



0 8 . 2

Figure 13 shows the variation of current with voltage for the lamp between 2 V and 12 V.

Figure 13



Calculate the resistance of the lamp when the voltage across the lamp is 8.0 V.

[2 marks]

resistance = _____ Ω

0 8 . 3

Explain, in terms of electron movement, why the resistance of the filament lamp changes as the voltage changes as shown in **Figure 13**.

[3 marks]

Question 8 continues on the next page

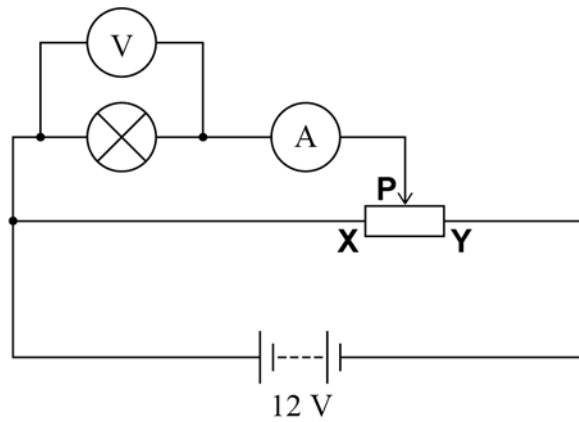
Turn over ►



0 8 . 4

Figure 14 shows an alternative circuit used to investigate the variation of current with voltage for the lamp.

Figure 14



The circuit components are the same as in **Figure 12**.
When the voltage across the lamp is 12 V its resistance is 6.0Ω .

P is moved to position **Y**.

Calculate the total resistance of the circuit.

[2 marks]

total resistance = _____ Ω

0 8 . 5

Calculate the power transferred by the battery when **P** is at position **Y**.

[2 marks]

power = _____ W



There are no questions printed on this page

*Do not write
outside the
box*

**DO NOT WRITE ON THIS PAGE
ANSWER IN THE SPACES PROVIDED**



There are no questions printed on this page

*Do not write
outside the
box*

**DO NOT WRITE ON THIS PAGE
ANSWER IN THE SPACES PROVIDED**

Copyright information

For confidentiality purposes, all acknowledgements of third-party copyright material are published in a separate booklet. This booklet is published after each live examination series and is available for free download from www.aqa.org.uk.

Permission to reproduce all copyright material has been applied for. In some cases, efforts to contact copyright-holders may have been unsuccessful and AQA will be happy to rectify any omissions of acknowledgements. If you have any queries please contact the Copyright Team.

Copyright © 2022 AQA and its licensors. All rights reserved.



2 8



2 2 6 A 7 4 0 7 / 1

IB/M/Jun22/7407/1