

Write your name here

Surname	Other names
---------	-------------

Pearson Edexcel Level 1/Level 2 GCSE (9 - 1)	Centre Number	Candidate Number									
	<table border="1" style="display: inline-table; border-collapse: collapse;"> <tr> <td style="width: 20px; height: 20px;"></td> <td style="width: 20px; height: 20px;"></td> <td style="width: 20px; height: 20px;"></td> <td style="width: 20px; height: 20px;"></td> <td style="width: 20px; height: 20px;"></td> </tr> </table>						<table border="1" style="display: inline-table; border-collapse: collapse;"> <tr> <td style="width: 20px; height: 20px;"></td> <td style="width: 20px; height: 20px;"></td> <td style="width: 20px; height: 20px;"></td> <td style="width: 20px; height: 20px;"></td> </tr> </table>				

Biology

Paper 1

Higher Tier

Tuesday 15 May 2018 – Afternoon Time: 1 hour 45 minutes	Paper Reference 1BI0/1H
---	-----------------------------------

You must have: Calculator, ruler	Total Marks
--	-------------

Instructions

- Use **black** ink or ball-point pen.
- **Fill in the boxes** at the top of this page with your name, centre number and candidate number.
- Answer **all** questions.
- Answer the questions in the spaces provided
– *there may be more space than you need.*
- Calculators may be used.
- Any diagrams may NOT be accurately drawn, unless otherwise indicated.
- You must **show all your working out** with **your answer clearly identified** at the **end of your solution**.

Information

- The total mark for this paper is 100.
- The marks for **each** question are shown in brackets
– *use this as a guide as to how much time to spend on each question.*
- In questions marked with an **asterisk (*)**, marks will be awarded for your ability to structure your answer logically showing how the points that you make are related or follow on from each other where appropriate.

Advice

- Read each question carefully before you start to answer it.
- Try to answer every question.
- Check your answers if you have time at the end.

Turn over ►

P52466A

©2018 Pearson Education Ltd.
1/1/1/1/1/1/1/



Answer ALL questions. Write your answers in the spaces provided.

Some questions must be answered with a cross .
If you change your mind about an answer, put a line through the box and then mark your new answer with a cross .

1 Figure 1 shows an eye.

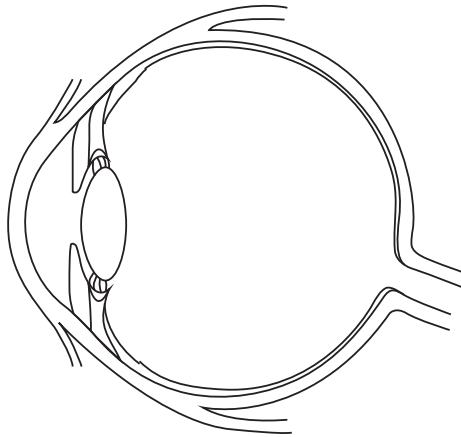


Figure 1

(a) (i) When the eye changes from focusing on a distant object to focusing on a near object

(1)

- A the lens gets thinner to bend the light rays more
- B the lens gets thicker to bend the light rays more
- C the lens gets thinner to bend the light rays less
- D the lens gets thicker to bend the light rays less

(ii) Give a reason why people who are short-sighted cannot see distant objects clearly.

(1)

.....

.....

DO NOT WRITE IN THIS AREA

DO NOT WRITE IN THIS AREA

DO NOT WRITE IN THIS AREA

DO NOT WRITE IN THIS AREA

DO NOT WRITE IN THIS AREA

DO NOT WRITE IN THIS AREA



(iii) State the type of lens that can be used to correct short-sightedness.

(1)

(b) A student was given the hypothesis 'People with brown eyes are more likely to be short-sighted than people with blue eyes.'

Devise a plan to test this hypothesis.

(3)

(Total for Question 1 = 6 marks)



DO NOT WRITE IN THIS AREA

DO NOT WRITE IN THIS AREA

DO NOT WRITE IN THIS AREA

DO NOT WRITE IN THIS AREA

DO NOT WRITE IN THIS AREA

DO NOT WRITE IN THIS AREA

DO NOT WRITE IN THIS AREA

DO NOT WRITE IN THIS AREA

DO NOT WRITE IN THIS AREA

DO NOT WRITE IN THIS AREA

DO NOT WRITE IN THIS AREA

DO NOT WRITE IN THIS AREA

BLANK PAGE



2 (a) Obesity increases the risk of a person developing cardiovascular disease.

Losing weight can reduce the risk of this disease occurring.

Explain why exercise can cause weight loss.

(2)

.....

.....

.....

.....

(b) Figure 2 shows a gastric band fitted to a stomach.

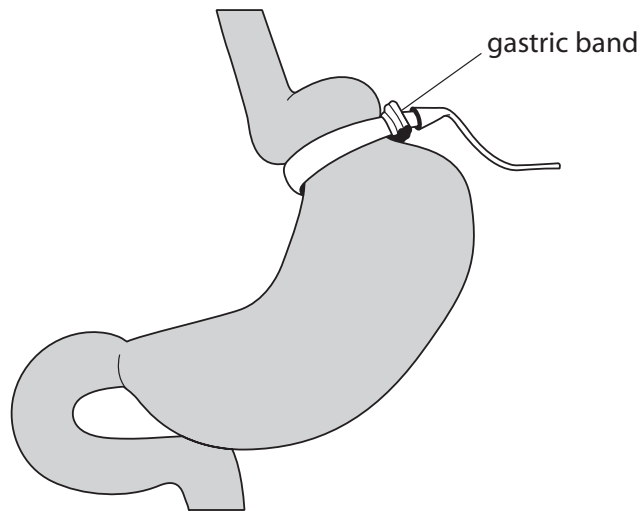


Figure 2

Explain how a gastric band helps a person to lose weight.

(2)

.....

.....

.....

.....

.....



P 5 2 4 6 6 A 0 5 3 6

(c) BMI and waist:hip ratio can be used to find out if a person is obese.

Figure 3 shows some data for two males.

male	BMI	waist : hip ratio
A	27.3	0.85
B	?	0.81

Figure 3

BMI is calculated using the equation:

$$\text{BMI} = \frac{\text{mass in kilograms}}{(\text{height in metres})^2}$$

(i) Male B has a mass of 72 kg and a height of 1.81 m.

Calculate the BMI of male B.

Give the answer to 3 significant figures.

(3)

BMI =

DO NOT WRITE IN THIS AREA

DO NOT WRITE IN THIS AREA

DO NOT WRITE IN THIS AREA

DO NOT WRITE IN THIS AREA

DO NOT WRITE IN THIS AREA

DO NOT WRITE IN THIS AREA



(ii) Figure 4 shows the interpretation of BMI values.

BMI range	interpretation
below 18.5	underweight
18.5 – 24.9	normal
25.0 – 29.9	overweight
30.0 and above	obese

Figure 4

Males with a waist : hip ratio above 0.90 are defined as abdominally obese.

Explain what the BMI and waist : hip ratio for male A shows about his weight distribution.

(2)

.....

.....

.....

.....

.....

(Total for Question 2 = 9 marks)



3 (a) Figure 5 shows two potato chips.

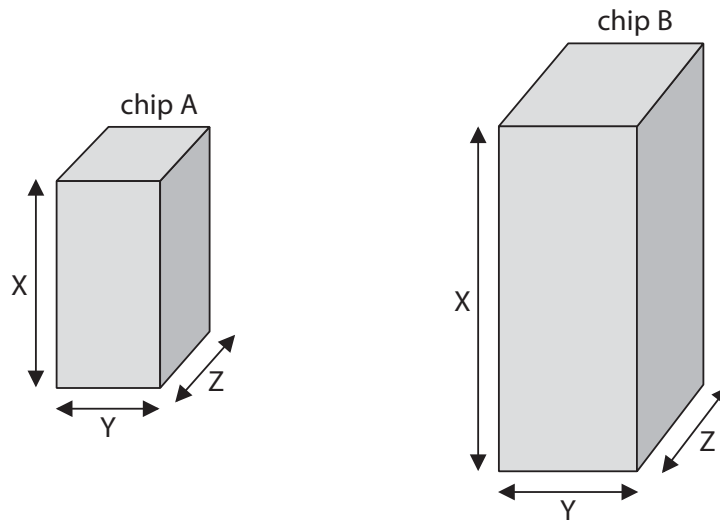


Figure 5

Figure 6 shows some information about each potato chip.

potato chip	length of X in cm	length of Y in cm	length of Z in cm	total surface area of four sides in cm ²	total surface area of top and bottom in cm ²	total surface area of chip in cm ²
A	3.0	1.5	1.5	18.0	4.5	22.5
B	5.0	2.0	2.0	?	?	?

Figure 6

(i) Calculate the total surface area of potato chip B using the formula,

$$\text{Total surface area} = 2XY + 2XZ + 2YZ$$

(2)

total surface area = cm²



(ii) The potato chips were placed in distilled water for 20 minutes.

Figure 7 shows the increase in mass of each potato chip.

potato chip	increase in mass in grams
A	0.1
B	0.3

Figure 7

Explain why potato chip B has a greater increase in mass than potato chip A.

(2)

.....

.....

.....

.....

(iii) Potato chip A is transferred from the distilled water into a concentrated salt solution.

Explain what will happen to the cells in potato chip A.

(3)

.....

.....

.....

.....

.....

.....



DO NOT WRITE IN THIS AREA

DO NOT WRITE IN THIS AREA

DO NOT WRITE IN THIS AREA

DO NOT WRITE IN THIS AREA

DO NOT WRITE IN THIS AREA

DO NOT WRITE IN THIS AREA

(b) The potatoes of a potato plant develop underground.

Explain **one** difference in the sub-cellular structures in a cell in the potato and those in a cell in the leaf of the potato plant.

(2)

.....

.....

.....

.....

(Total for Question 3 = 9 marks)

DO NOT WRITE IN THIS AREA

DO NOT WRITE IN THIS AREA

DO NOT WRITE IN THIS AREA

DO NOT WRITE IN THIS AREA

DO NOT WRITE IN THIS AREA

DO NOT WRITE IN THIS AREA



DO NOT WRITE IN THIS AREA

DO NOT WRITE IN THIS AREA

DO NOT WRITE IN THIS AREA

DO NOT WRITE IN THIS AREA

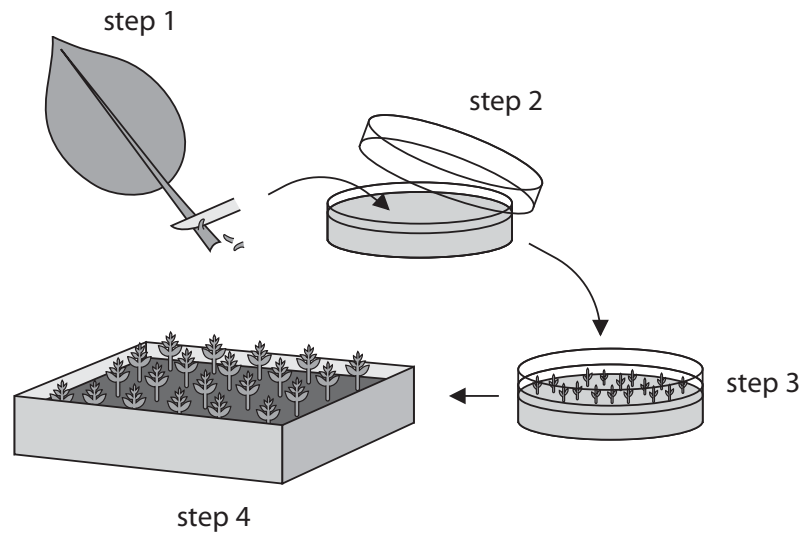
DO NOT WRITE IN THIS AREA

DO NOT WRITE IN THIS AREA

BLANK PAGE



4 (a) Figure 8 shows a method of producing plants.



Step 1. Cells taken from parent plant.

Step 2. Cells placed on agar growth medium.

Step 3. Cells develop into tiny plantlets.

Step 4. Plantlets grown in compost.

Figure 8

(i) Some cells in each plantlet develop into root cells.

Name the process occurring as these cells develop into root cells.

(1)

(ii) Describe the advantages of producing plants by the method shown in Figure 8.

(2)

DO NOT WRITE IN THIS AREA

DO NOT WRITE IN THIS AREA

DO NOT WRITE IN THIS AREA

DO NOT WRITE IN THIS AREA

DO NOT WRITE IN THIS AREA

DO NOT WRITE IN THIS AREA



(iii) An autoclave is used to prepare the agar growth medium used in Step 2.

Explain why the agar growth medium is autoclaved.

(2)

.....

.....

.....

.....

(iv) One of the plantlets had different coloured leaves.

Give **one** reason why this plantlet had different coloured leaves.

(1)

.....

.....



DO NOT WRITE IN THIS AREA

DO NOT WRITE IN THIS AREA

DO NOT WRITE IN THIS AREA

DO NOT WRITE IN THIS AREA

DO NOT WRITE IN THIS AREA

DO NOT WRITE IN THIS AREA

(b) Crop plants provide a source of energy in the form of carbohydrates such as starch and sugars.

(i) Describe the test to identify starch.

(2)

.....

.....

.....

.....

.....

DO NOT WRITE IN THIS AREA

DO NOT WRITE IN THIS AREA

DO NOT WRITE IN THIS AREA

DO NOT WRITE IN THIS AREA

DO NOT WRITE IN THIS AREA

DO NOT WRITE IN THIS AREA



(ii) The amount of energy in the sugars extracted from crop plants can be measured using the calorimeter shown in Figure 9.

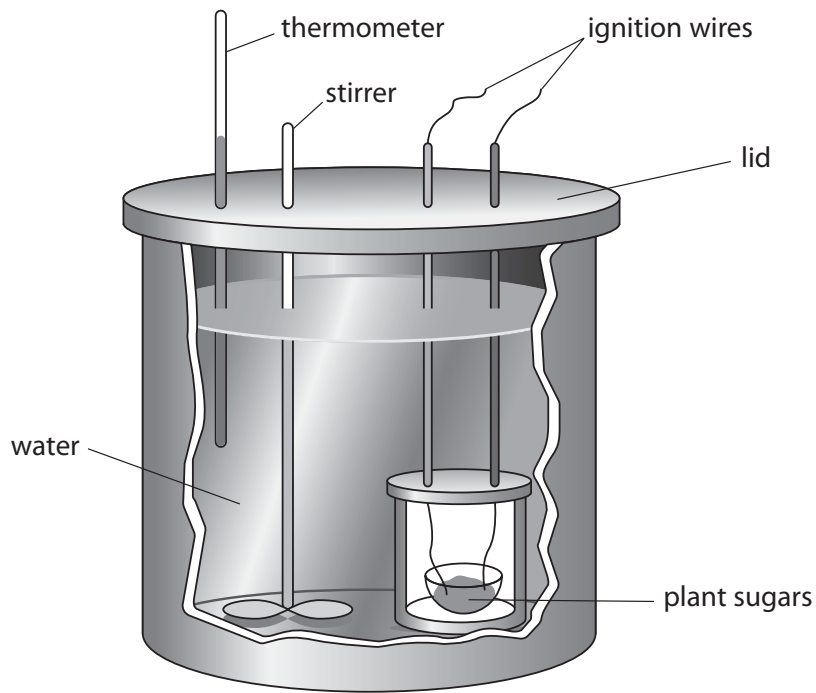


Figure 9

Explain why the calorimeter has a lid.

(2)

.....

.....

.....

.....

.....

(iii) State why it is important to stir the water in the calorimeter.

(1)

.....

.....

(Total for Question 4 = 11 marks)



5 *Streptococcus* bacteria can cause a sore throat or skin infection.

An illness called scarlet fever can also develop during an infection with this bacterium.

(a) (i) Give **two** precautions a doctor should take when treating a patient who is infected with *Streptococcus*.

(2)

.....

.....

.....

.....

.....

(ii) From September 2013 to March 2014 there were 2 830 cases of scarlet fever in the UK.

From September 2014 to March 2015 there were 5 943 cases of scarlet fever.

Calculate the percentage increase of the number of cases of scarlet fever between the periods September 2014 to March 2015 and September 2013 to March 2014.

(2)

..... %

DO NOT WRITE IN THIS AREA

DO NOT WRITE IN THIS AREA

DO NOT WRITE IN THIS AREA

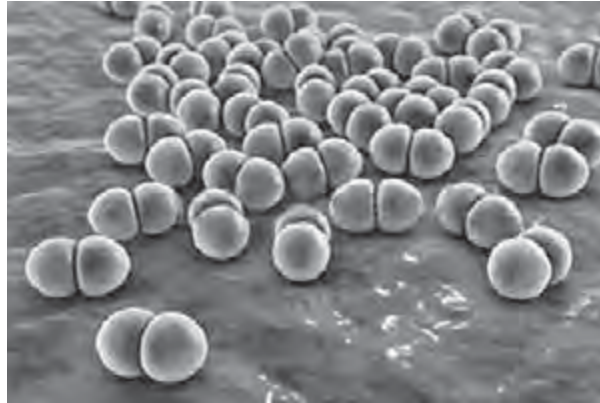
DO NOT WRITE IN THIS AREA

DO NOT WRITE IN THIS AREA

DO NOT WRITE IN THIS AREA



(iii) Figure 10 shows some *Streptococcus* bacteria.



© Kateryna Kon/Shutterstock

Figure 10

Some bacteria are motile, meaning they can move themselves.

Why is a *Streptococcus* bacterium not motile?

(1)

- A** it does not have flagella
- B** it does not have plasmids
- C** it does not have ribosomes
- D** it does not have acrosomes

(b) Patients with scarlet fever can be treated with antibiotics.

New antibiotics need to be tested before they can be used in patients.

Which is the correct sequence for the development of a new medicine?

(1)

- A** testing in healthy volunteers → testing using cultured cells → double blind trials on patients
- B** testing using cultured cells → double blind trials on patients → testing in healthy volunteers
- C** testing in healthy volunteers → double blind trials on patients → testing using cultured cells
- D** testing using cultured cells → testing in healthy volunteers → double blind trials on patients



(c) Most cases of scarlet fever occur in children.

Adults have usually developed immunity to a toxin that the *Streptococcus* bacteria produce during infection.

Explain how an adult develops immunity to the toxin.

(3)

.....

.....

.....

.....

.....

.....

.....

.....

.....

.....

.....

.....

.....

.....

.....

.....

.....

.....

.....

.....

.....

(Total for Question 5 = 9 marks)

DO NOT WRITE IN THIS AREA

DO NOT WRITE IN THIS AREA

DO NOT WRITE IN THIS AREA

DO NOT WRITE IN THIS AREA

DO NOT WRITE IN THIS AREA

DO NOT WRITE IN THIS AREA



6 (a) In 2012, two scientists were awarded the Nobel prize for their research on stem cells.

They showed that adult cells could be reprogrammed to become cells with the properties of embryonic stem cells.

Describe the possible benefits of this research.

(3)

.....

.....

.....

.....

.....

.....

.....

.....

DO NOT WRITE IN THIS AREA

DO NOT WRITE IN THIS AREA

DO NOT WRITE IN THIS AREA

DO NOT WRITE IN THIS AREA

DO NOT WRITE IN THIS AREA

DO NOT WRITE IN THIS AREA



(b) Figure 11 shows four stages of mitosis, labelled P, Q, R and S.

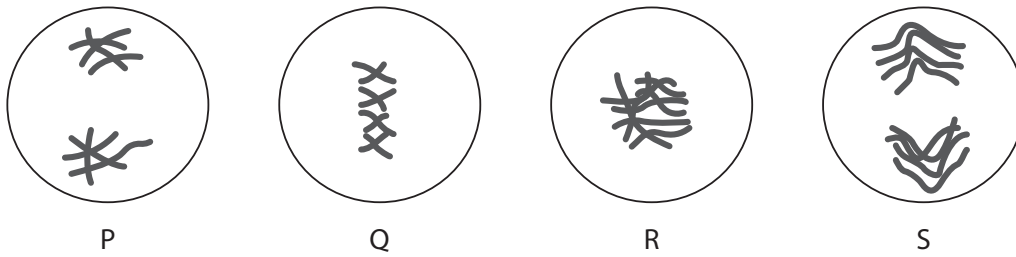


Figure 11

(i) Which is the correct order for these stages?

(1)

- A** Q → R → S → P
- B** R → Q → S → P
- C** R → S → Q → P
- D** Q → S → R → P

(ii) The stage of mitosis labelled S in figure 11 is

(1)

- A** anaphase
- B** prophase
- C** telophase
- D** metaphase

(iii) Interphase is part of the cell cycle.

Describe what happens during interphase.

(2)

.....

.....

.....

.....

DO NOT WRITE IN THIS AREA

DO NOT WRITE IN THIS AREA

DO NOT WRITE IN THIS AREA

DO NOT WRITE IN THIS AREA

DO NOT WRITE IN THIS AREA

DO NOT WRITE IN THIS AREA



(c) Figure 12 shows a root tip with cells in different stages of mitosis.

The image was magnified 400 ×.



© WIM VAN EGMOND/SCIENCE PHOTO LIBRARY

Figure 12

Explain how a magnification of 400 × can be obtained using the lenses on a light microscope.

(2)

.....

.....

.....

.....

(Total for Question 6 = 9 marks)



7 (a) Figure 13 shows the pentadactyl limb of a bat and a cat.

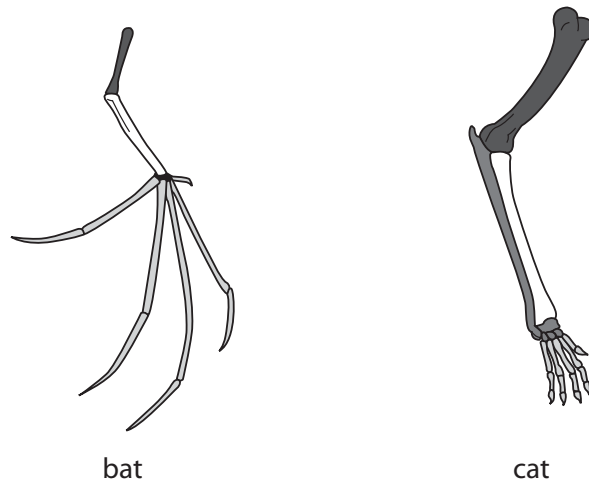


Figure 13

(i) Describe the reasons why the anatomy of the pentadactyl limb suggests that bats and cats evolved from a common ancestor.

(2)

.....

.....

.....

.....

.....

(ii) Genetic analysis also provides evidence for evolution.

Scientists can sequence genes from different organisms.

Describe how this type of genetic analysis provides evidence for evolution.

(2)

.....

.....

.....

.....

.....

DO NOT WRITE IN THIS AREA

DO NOT WRITE IN THIS AREA

DO NOT WRITE IN THIS AREA

DO NOT WRITE IN THIS AREA

DO NOT WRITE IN THIS AREA

DO NOT WRITE IN THIS AREA



(b) Mendel's research on pea plants showed that genetic traits are inherited.

(i) Which term is used to describe the expression of traits in an organism? (1)

- A genotype
- B phenotype
- C allele
- D gamete

(ii) Mendel crossed pea plants that produced round seeds with pea plants that produced wrinkled seeds.

All the offspring produced round seeds.

He then crossed these offspring with each other.

Some pea plants in the next generation produced round seeds and the others produced wrinkled seeds.

Explain how this showed that some inherited traits are not expressed in an organism. (3)

.....

.....

.....

.....

.....

.....

.....

.....

.....

DO NOT WRITE IN THIS AREA

DO NOT WRITE IN THIS AREA

DO NOT WRITE IN THIS AREA

DO NOT WRITE IN THIS AREA

DO NOT WRITE IN THIS AREA

DO NOT WRITE IN THIS AREA



- (c) Duchenne muscular dystrophy is a recessive sex-linked genetic disorder. This disorder causes muscle weakness.

Figure 14 shows the inheritance of Duchenne muscular dystrophy in a family.

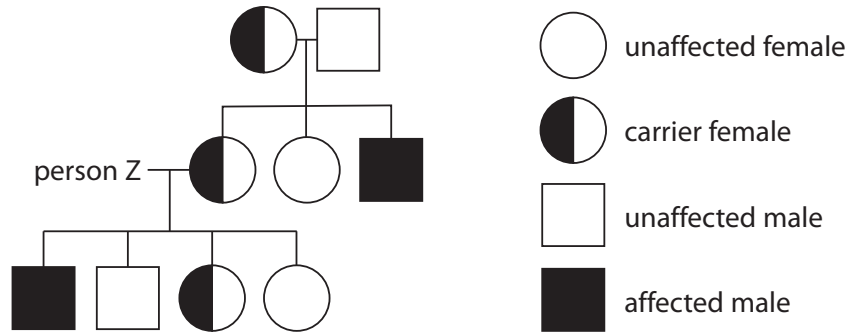


Figure 14

State and explain the phenotype of person Z.

(3)

.....

.....

.....

.....

.....

.....

.....

.....

(Total for Question 7 = 11 marks)



DO NOT WRITE IN THIS AREA

DO NOT WRITE IN THIS AREA

DO NOT WRITE IN THIS AREA

DO NOT WRITE IN THIS AREA

DO NOT WRITE IN THIS AREA

DO NOT WRITE IN THIS AREA

BLANK PAGE



8 Potato cells contain the enzyme catalase.

This enzyme catalyses the breakdown of hydrogen peroxide into oxygen and water.

Figure 15 shows what happened when a student placed a potato disc in a 5% hydrogen peroxide solution.

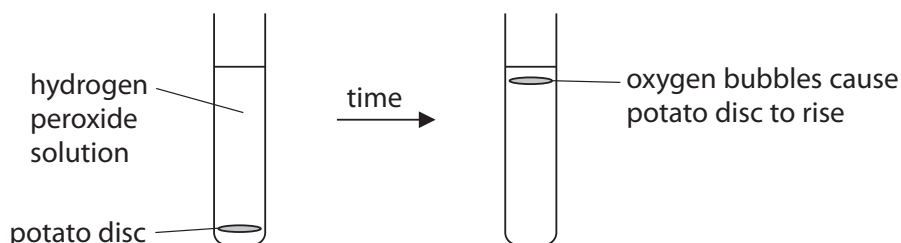


Figure 15

The student measured the time taken for the potato disc to rise.

The student repeated the investigation using 10%, 15% and 20% concentrations of hydrogen peroxide solution.

(a) (i) Which term describes the hydrogen peroxide in this reaction?

(1)

- A product
- B substrate
- C active site
- D control

(ii) The potato discs all had the same mass.

Explain why the student used potato discs with the same mass.

(2)

.....

.....

.....

.....

DO NOT WRITE IN THIS AREA

DO NOT WRITE IN THIS AREA

DO NOT WRITE IN THIS AREA

DO NOT WRITE IN THIS AREA

DO NOT WRITE IN THIS AREA

DO NOT WRITE IN THIS AREA



(iii) State **two** other factors that need to be kept the same to improve this investigation. (2)

.....

.....

.....

.....

DO NOT WRITE IN THIS AREA

DO NOT WRITE IN THIS AREA

DO NOT WRITE IN THIS AREA

DO NOT WRITE IN THIS AREA

DO NOT WRITE IN THIS AREA

DO NOT WRITE IN THIS AREA



(b) Figure 16 shows the results of this investigation.

The student calculated the rate of reaction using

$$\frac{1}{\text{time in seconds}}$$

concentration of hydrogen peroxide solution (%)	time taken for disc to rise (s)	rate (s ⁻¹)
5	325	0.003
10	245	0.004
15	132	0.008
20	72	0.014

Figure 16

(i) State and explain a conclusion based on these results.

(4)

.....

.....

.....

.....

.....

.....

.....

.....

.....

DO NOT WRITE IN THIS AREA

DO NOT WRITE IN THIS AREA

DO NOT WRITE IN THIS AREA

DO NOT WRITE IN THIS AREA

DO NOT WRITE IN THIS AREA

DO NOT WRITE IN THIS AREA



- (ii) The student repeated the investigation with a 25% hydrogen peroxide solution and recorded a time of 75 seconds.

Calculate the rate of reaction for the 25% hydrogen peroxide solution.

(2)

..... s⁻¹

- (iii) The student decided that the rate for the 25% hydrogen peroxide solution was not anomalous.

Give the reason why the result was not anomalous.

(1)

.....

.....

.....

.....

(Total for Question 8 = 12 marks)

DO NOT WRITE IN THIS AREA

DO NOT WRITE IN THIS AREA

DO NOT WRITE IN THIS AREA

DO NOT WRITE IN THIS AREA

DO NOT WRITE IN THIS AREA

DO NOT WRITE IN THIS AREA



DO NOT WRITE IN THIS AREA

DO NOT WRITE IN THIS AREA

DO NOT WRITE IN THIS AREA

DO NOT WRITE IN THIS AREA

DO NOT WRITE IN THIS AREA

DO NOT WRITE IN THIS AREA

BLANK PAGE



9 (a) Yeast cells can be genetically modified to produce a painkiller.

This painkiller is usually obtained from opium poppies.

One method for genetically modifying a yeast cell uses a plasmid containing the desired gene.

(i) Explain how a gene can be inserted into a plasmid.

(2)

.....

.....

.....

.....

.....

.....

.....

(ii) Discuss the possible benefits and risks of producing painkillers from genetically modified yeast cells rather than extracting the painkillers from poppies.

(3)

.....

.....

.....

.....

.....

.....

.....

.....

.....

.....



DO NOT WRITE IN THIS AREA

DO NOT WRITE IN THIS AREA

DO NOT WRITE IN THIS AREA

DO NOT WRITE IN THIS AREA

DO NOT WRITE IN THIS AREA

DO NOT WRITE IN THIS AREA

(b) Figure 17 shows the structure of a DNA nucleotide.

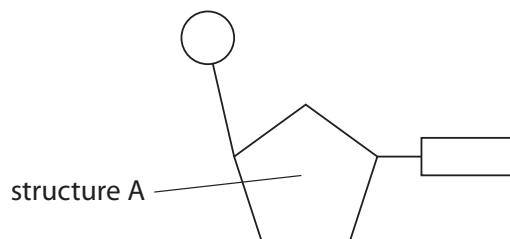


Figure 17

(i) Structure A is a

- A** base
- B** phosphate
- C** sugar
- D** polymer

(1)

DO NOT WRITE IN THIS AREA

DO NOT WRITE IN THIS AREA

DO NOT WRITE IN THIS AREA

DO NOT WRITE IN THIS AREA

DO NOT WRITE IN THIS AREA

DO NOT WRITE IN THIS AREA



10 A scientist was planning to compare the effectiveness of the antibiotic myxopyronin on two different species of bacteria.

Figure 18 shows the equipment the scientist can use.

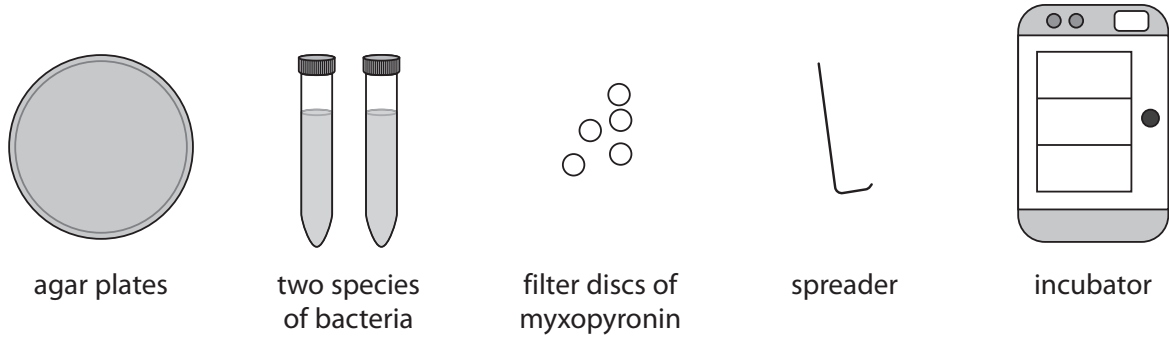


Figure 18

(a) (i) Describe how the scientist could determine the effectiveness of myxopyronin on the two species of bacteria.

(2)

.....

.....

.....

.....

.....

.....

DO NOT WRITE IN THIS AREA

DO NOT WRITE IN THIS AREA

DO NOT WRITE IN THIS AREA

DO NOT WRITE IN THIS AREA

DO NOT WRITE IN THIS AREA

DO NOT WRITE IN THIS AREA



(ii) Myxopyronin inhibits bacterial RNA polymerase.

Explain why the antibiotic myxopyronin can be used to treat bacterial infections in humans.

(4)

.....

.....

.....

.....

.....

.....

.....

.....

.....

.....

.....

.....

.....

.....

.....

.....

.....

.....

.....

.....

.....

.....

QUESTION 10 CONTINUES ON THE NEXT PAGE.



DO NOT WRITE IN THIS AREA

DO NOT WRITE IN THIS AREA

DO NOT WRITE IN THIS AREA

DO NOT WRITE IN THIS AREA

DO NOT WRITE IN THIS AREA

DO NOT WRITE IN THIS AREA

